

# In Branch Compliance Overview

Branch Environment and Merchandising

# Branch Compliance Signage

- As we build new branches and are implementing new merchandising fixtures into the branch interiors, we want to make sure that these new fixtures have the appropriate compliance.
- And as we convert the existing branches into our Universal Branch Format we are removing some existing merchandising fixtures that had kept certain compliance signage on the these fixtures.
- We have outlined the different branch fixtures and components and the placement of compliance signage as well as additional compliance signage that is required within a branch.
- All of the compliance fixtures and inserts can be purchased on PNC Buys.
- Any questions, please refer to the **Branch and Digital Merchandising Resource Page** or email the **RCB Mailbox**.

# Branch Fixtures/Components

## Compliance Signage

- **Discovery Table**

- No compliance needed on the discovery table



- **Perch**

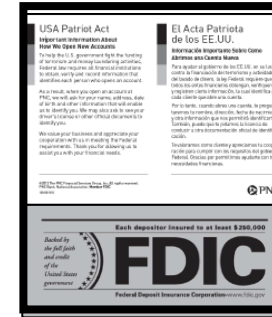
- No compliance needed on the perch

# Branch Fixtures/Components

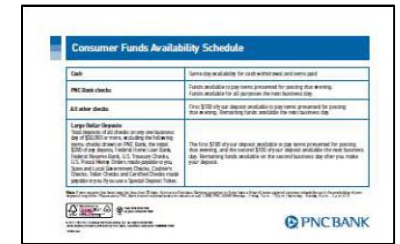
## Compliance Signage

### • Concierge Stations

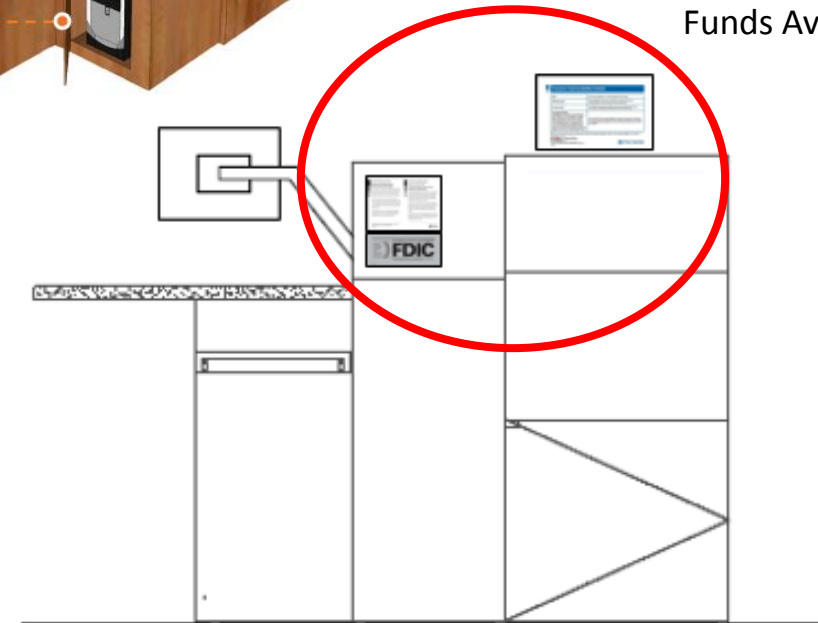
- FDIC/Patriot Act Combination Plexi (1 per each station)
  - Combo Plexi- #163708
  - FDIC Insert- #160321
  - Patriot Act Insert-#125650-0313
- Funds Availability (with base) (1 per each station)
  - Funds Availability Insert- #129287
  - Funds Availability Plexi-#124793



FDIC/Patriot Act Combo



Funds Availability

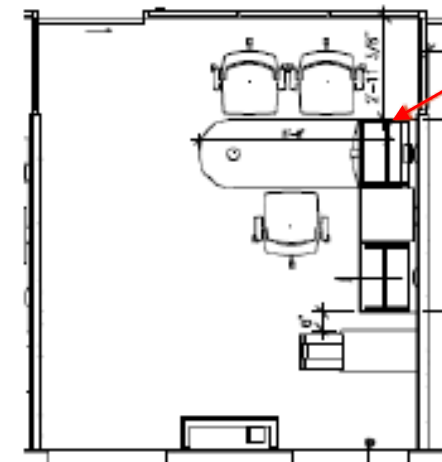
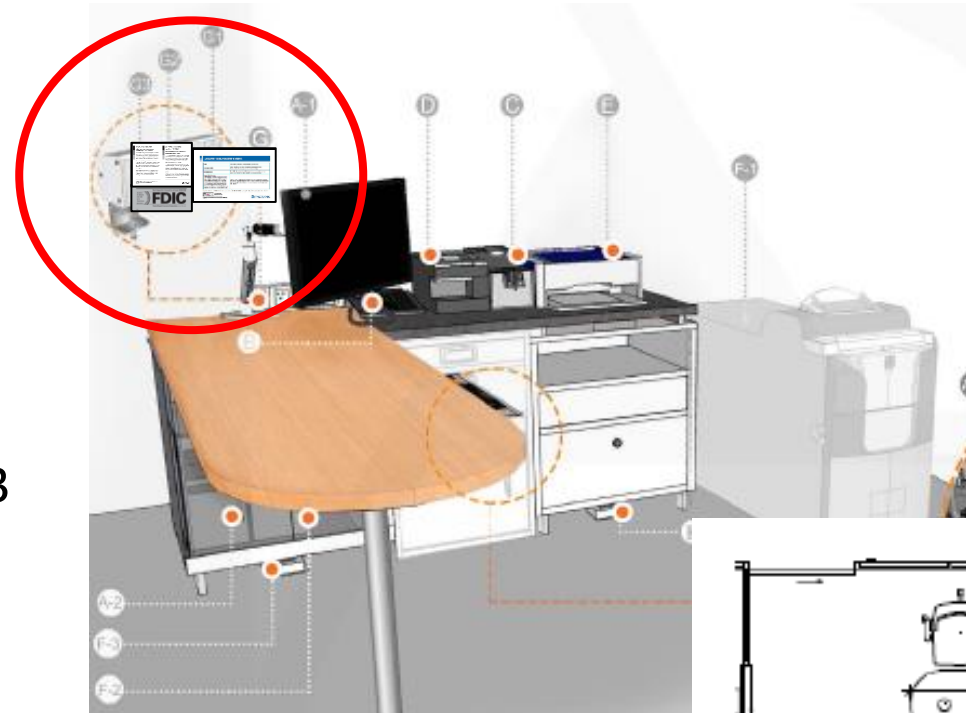


# Branch Fixtures/Components

## Compliance Signage

- **Universal Banking Offices**

- FDIC/Patriot Act Combination Plexi (1 per office)
  - Combo Plexi- #163708
  - FDIC Insert- #160321
  - Patriot Act Insert-#125650-0313
- Funds Availability (flat/applied) (1 per office)
  - Funds Availability Insert- #129287
  - Funds Availability Plexi #124793



Placement of the Compliance signage on the wall.

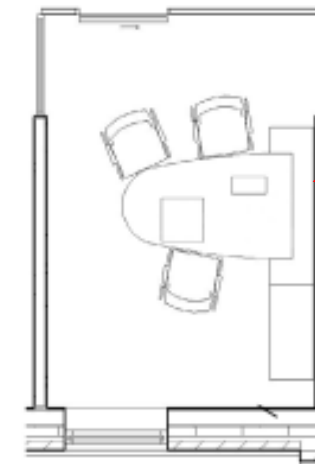
**Note:** If this office is used as an I&R Office you will need to make sure to remove the FDIC and Funds Availability signage and display the appropriate Important Investor Information disclosure sign on the desk.

# Branch Fixtures/Components

## Compliance Signage

- **Collaborative Offices**

- FDIC/Patriot Act Combination Plexi (1 per office)
  - Combo Plexi- #163708
  - FDIC Insert- #160321
  - Patriot Act Insert-#125650-0313
- Funds Availability (flat/applied) (1 per office)
  - Funds Availability Insert- #129287
  - Funds Availability Plexi #124793



Placement of the Compliance signage on the wall.

**Note:** If this office is used as an I&R Office you will need to make sure to remove the FDIC and Funds Availability signage and display the appropriate Important Investor Information disclosure sign on the desk.

# Branch Fixtures/Components

## Compliance Signage

- **Traditional Offices**

- Continue to display the FDIC and Patriot Act Platform Desk Compliance
  - Patriot Act Plexi desktop- #126327
  - Patriot Act insert #125650-0313
  - FDIC plexi desktop #126326
  - FDIC insert #160321

- **Line of Business Offices**

- Continue to display the appropriate Line of Business Desk Compliance
- Please refer to the P&P for required compliance signage

# Branch Fixtures/Components

## Compliance Signage

- **Additional Compliance Signage Required for in Branch**

- Regulation Board
  - Fixture- #127214
  - Insert- Each state has their own insert
- Teller Line
  - FDIC
    - FDIC Applied Fixture- #126325
    - FDIC Insert- #160321
  - Funds Availability (1 per teller line- must be visible to customer)
    - Funds Availability Insert-#129287
    - Funds Availability Plexi-#124793
- Customer Service Desk
  - FDIC Plexi Desktop- #126326
  - FDIC Insert- #160321
- Drive Up
  - FDIC sticker decal- #160322



Regulation Board



Teller Line



Customer Service Desk



VAT tube

Drive Up Window

Apply new sticker directly over old.

Drive Up Window

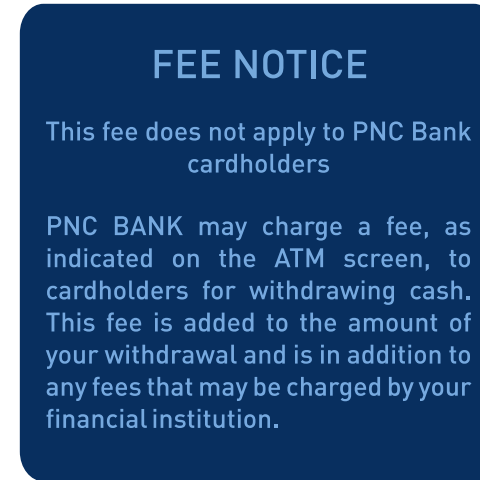
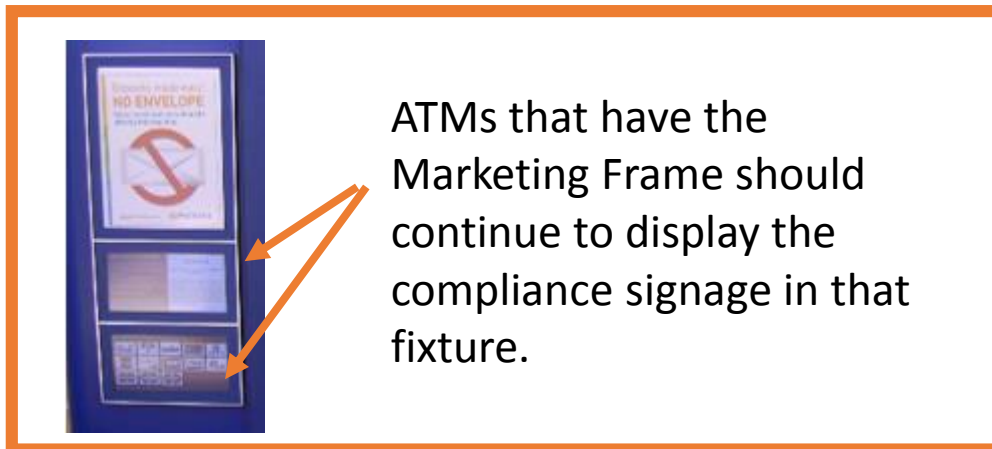


# ATM

## Compliance Signage

- **Required Compliance Signage**

- Fee Notice (sticker inside left of the ATM)
- Network Logo Panel (sticker inside right of the ATM)
- Safety Awareness/Security Notice



Fee Notice Sticker



Network Logo Panels



Safety Awareness Sticker