

SEE LAYOUT PLAN FOR TYPICAL CLEARANCE

ATTACH 2" X 3" X 1/8" ALUMINUM ANGLE TO OUTBOARD SIDES OF BACK AND SIDE PANELS. SHOOT ANGLE TO FLOOR WITH HILTI FASTENERS AS REQUIRED.

STAINLESS STEEL PIANO HINGE AS REQUIRED.

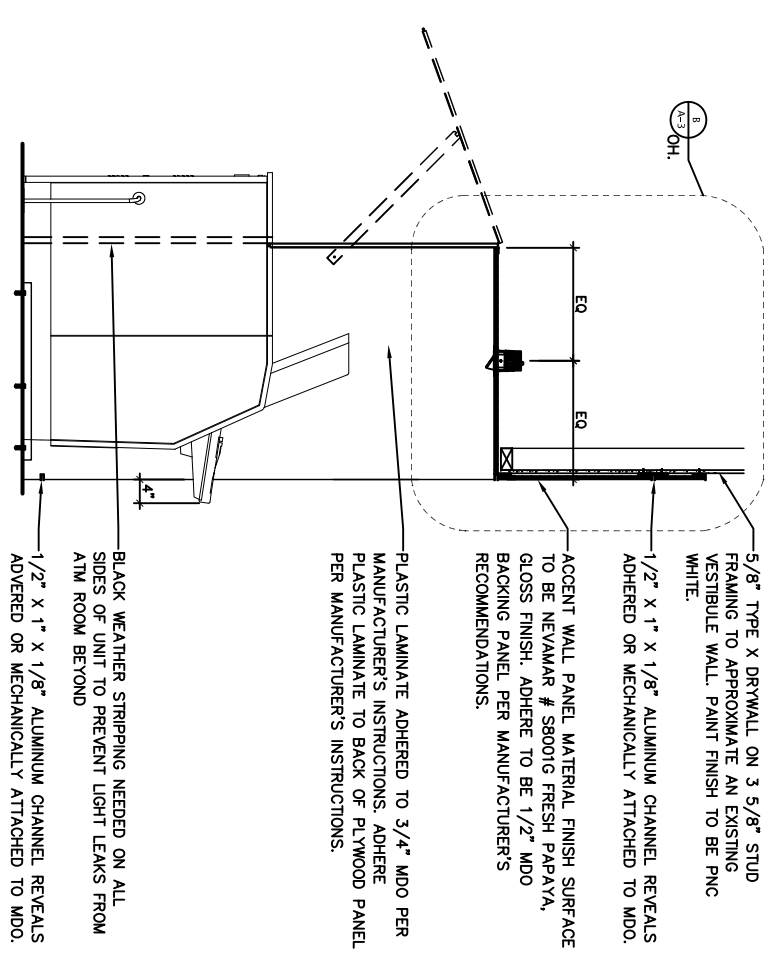
ATTACH 2" X 3" X 1/8" ALUMINUM ANGLE TO OUTBOARD SIDES OF BACK AND SIDE PANELS. SHOOT ANGLE TO FLOOR WITH HILTI FASTENERS AS REQUIRED.

5/8" TYPE X DRYWALL ON 3 5/8" STUD FRAMING TO APPROXIMATE AN EXISTING VESTIBULE WALL. PAINT FINISH TO BE PNC WHITE.

1" X 1/8" ALUMINUM STRIPPING TO SURROUND EDGES OF BUILD OUT.

WALL PANEL MATERIAL FINISH TO BE 3MM AVONITE PANELS (F1-9117 KOKOURA) ADHERED TO 1/2" MDO. ADHERE WITH STRUCTURAL SILICON PER AVONITE RECOMMENDATIONS.

INTEGRATED SOLID SURFACE (F1-9117 KOKOURA) SHELF MOUNTED TO OPPOSITE SIDE OF SURROUND FROM TRASH RECEPTACLE SLOT. SEE 4/A-1 FOR ADDITIONAL DETAILS.



5/8" TYPE X DRYWALL ON 3 5/8" STUD FRAMING TO APPROXIMATE AN EXISTING VESTIBULE WALL. PAINT FINISH TO BE PNC WHITE.

1/2" X 1" X 1/8" ALUMINUM CHANNEL REVEALS ADHERED OR MECHANICALLY ATTACHED TO MDO.

ACCENT WALL PANEL MATERIAL FINISH SURFACE TO BE NEVAMAR # S8001G FRESH PAPAYA, GLOSS FINISH. ADHERE TO BE 1/2" MDO BACKING PANEL PER MANUFACTURER'S RECOMMENDATIONS.

PLASTIC LAMINATE ADHERED TO 3/4" MDO PER MANUFACTURER'S INSTRUCTIONS. ADHERE PLASTIC LAMINATE TO BACK OF PLYWOOD PANEL PER MANUFACTURER'S INSTRUCTIONS.

5/8" TYPE X DRYWALL ON 3 5/8" STUD FRAMING TO APPROXIMATE AN EXISTING VESTIBULE WALL. PAINT FINISH TO BE PNC WHITE.

WALL PANEL MATERIAL FINISH TO BE 3MM AVONITE PANELS (F1-9117 KOKOURA) ADHERED TO 1/2" MDO. ADHERE WITH STRUCTURAL SILICON PER AVONITE RECOMMENDATIONS.

ACCENT WALL PANEL MATERIAL FINISH SURFACE TO BE NEVAMAR # S8001G FRESH PAPAYA, GLOSS FINISH. ADHERE TO BE 1/2" MDO BACKING PANEL PER MANUFACTURER'S RECOMMENDATIONS.

BLACK WEATHER STRIPPING NEEDED ON ALL SIDES OF UNIT TO PREVENT LIGHT LEAKS FROM ATM ROOM BEYOND.

1/2" X 1" X 1/8" ALUMINUM CHANNEL REVEALS ADHERED OR MECHANICALLY ATTACHED TO MDO.

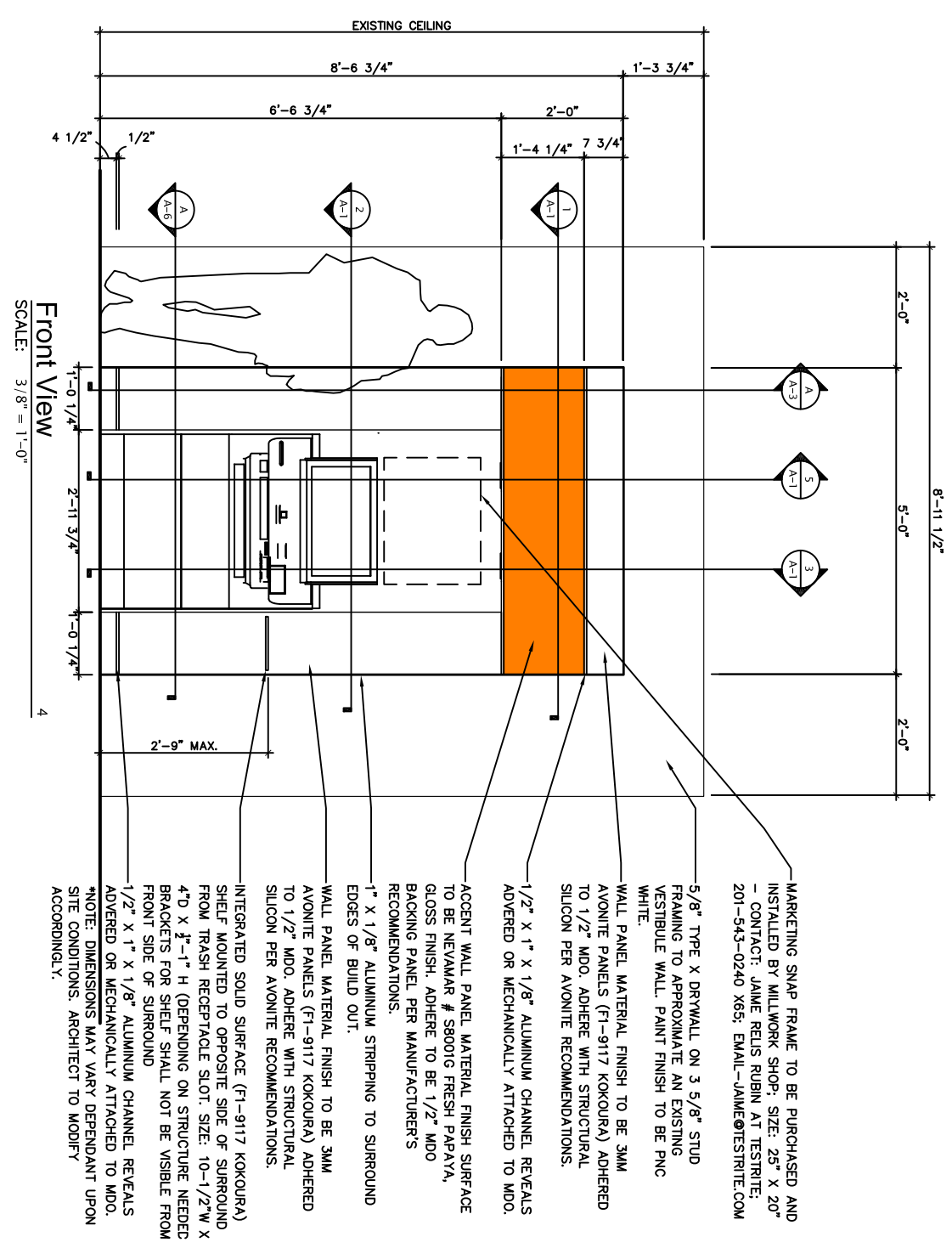
LED DOWNLIGHTS TO BE HALO H4 LED GIMBAL 2ND GENERATION 4000K WITH #H457RATED10 4" RECESSED REMODEL HOUSING NON-INSULATED CEILING.

STAINLESS STEEL PIANO HINGE AS REQUIRED.

PROP-BAR, SEE DETAILS ON A-3 FOR SPEC

BACKING SHEET PANEL TO BE 1/2" MDO WITH NEVAMAR APPLIED. HINGE ASSEMBLY AT TOP FASTEN WITH WING NUTS AS NEEDED TO SIDE OF PANEL TO SECURE PANEL IN PLACE.

BLACK WEATHER STRIPPING NEEDED ON ALL SIDES OF UNIT TO PREVENT LIGHT LEAKS FROM ATM ROOM BEYOND.



MARKETING SNAP FRAME TO BE PURCHASED AND INSTALLED BY MILLWORK SHOP. SIZE: 25" X 20" - CONTACT: JAMIE RELIS RUBIN AT TESTRITE; 201-543-0240 X65; EMAIL-JAIME@TESTRITE.COM

5/8" TYPE X DRYWALL ON 3 5/8" STUD FRAMING TO APPROXIMATE AN EXISTING VESTIBULE WALL. PAINT FINISH TO BE PNC WHITE.

WALL PANEL MATERIAL FINISH TO BE 3MM AVONITE PANELS (F1-9117 KOKOURA) ADHERED TO 1/2" MDO. ADHERE WITH STRUCTURAL SILICON PER AVONITE RECOMMENDATIONS.

ACCENT WALL PANEL MATERIAL FINISH SURFACE TO BE NEVAMAR # S8001G FRESH PAPAYA, GLOSS FINISH. ADHERE TO BE 1/2" MDO BACKING PANEL PER MANUFACTURER'S RECOMMENDATIONS.

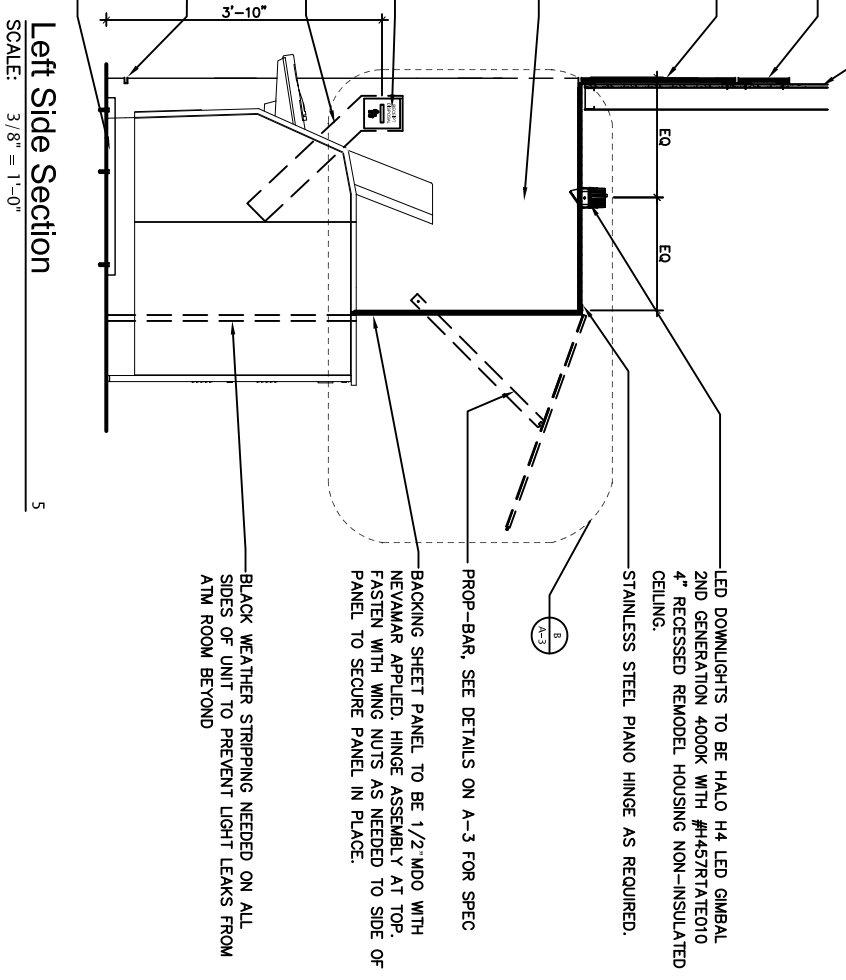
1" X 1/8" ALUMINUM STRIPPING TO SURROUND EDGES OF BUILD OUT.

WALL PANEL MATERIAL FINISH TO BE 3MM AVONITE PANELS (F1-9117 KOKOURA) ADHERED TO 1/2" MDO. ADHERE WITH STRUCTURAL SILICON PER AVONITE RECOMMENDATIONS.

INTEGRATED SOLID SURFACE (F1-9117 KOKOURA) SHELF MOUNTED TO OPPOSITE SIDE OF SURROUND FROM TRASH RECEPTACLE SLOT. SIZE: 10-1/2"W X 4"D X 3/4"-1" H (DEPENDING ON STRUCTURE NEEDED BRACKETS FOR SHELF SHALL NOT BE VISIBLE FROM FRONT SIDE OF SURROUND)

1/2" X 1" X 1/8" ALUMINUM CHANNEL REVEALS ADHERED OR MECHANICALLY ATTACHED TO MDO.

NOTE: DIMENSIONS MAY VARY DEPENDANT UPON SITE CONDITIONS. ARCHITECT TO MODIFY ACCORDINGLY.



5/8" TYPE X DRYWALL ON 3 5/8" STUD FRAMING TO APPROXIMATE AN EXISTING VESTIBULE WALL. PAINT FINISH TO BE PNC WHITE.

1/2" X 1" X 1/8" ALUMINUM CHANNEL REVEALS ADHERED OR MECHANICALLY ATTACHED TO MDO.

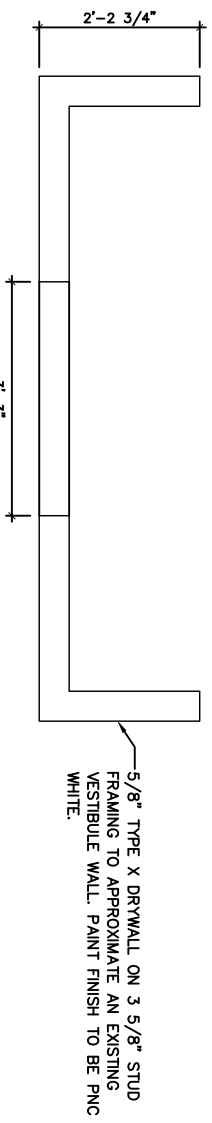
ACCENT WALL PANEL MATERIAL FINISH SURFACE TO BE NEVAMAR # S8001G FRESH PAPAYA, GLOSS FINISH. ADHERE TO BE 1/2" MDO BACKING PANEL PER MANUFACTURER'S RECOMMENDATIONS.

PLASTIC LAMINATE ADHERED TO 3/4" MDO PER MANUFACTURER'S INSTRUCTIONS. ADHERE PLASTIC LAMINATE TO BACK OF PLYWOOD PANEL PER MANUFACTURER'S INSTRUCTIONS.

WASTE SLOT TO BE 1/2" X 3" WIDE. FURNISH WITH ACRYLIC RECEIPT DISPOSAL FACE PLATE.

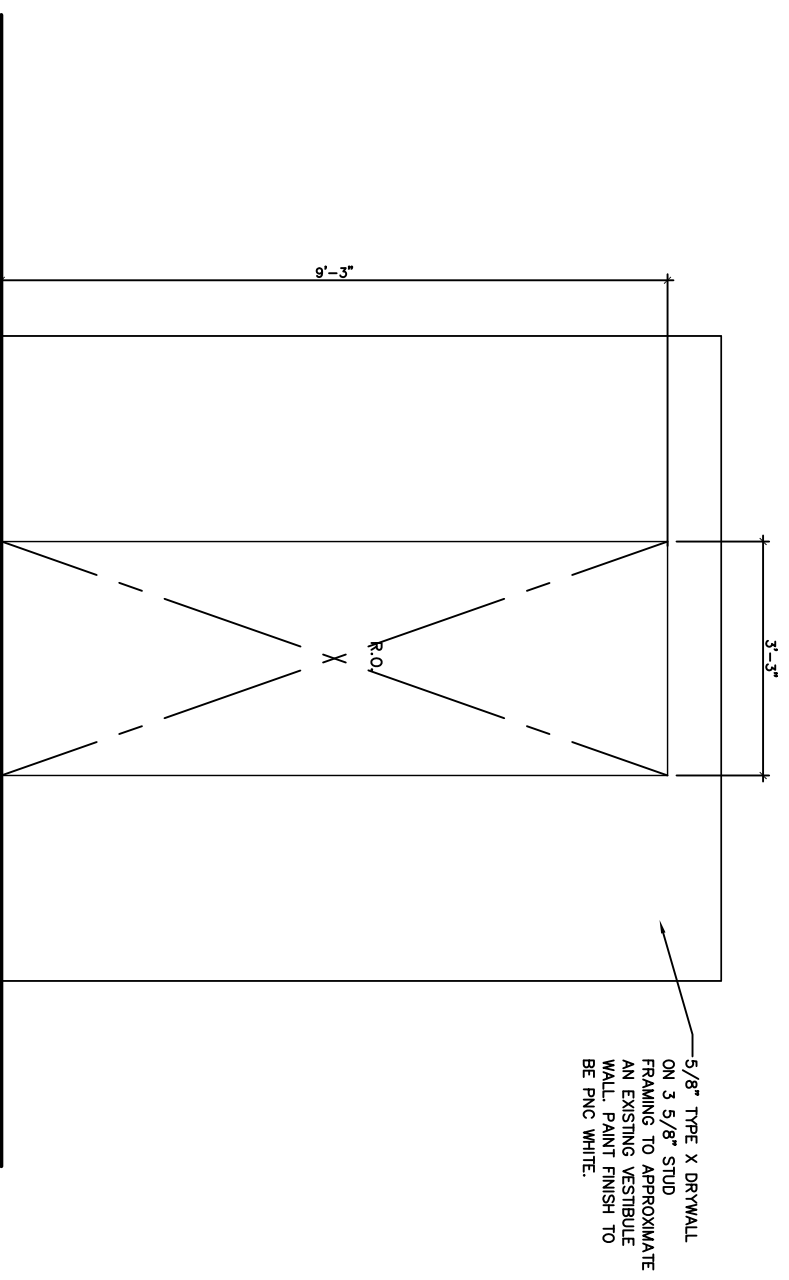
TRASH CHUTE TO CONNECT TO BACK OF WASTE SLOT

ATTACH 2" X 3" X 1/8" ALUMINUM ANGLE TO OUTBOARD SIDES OF BACK AND SIDE PANELS. SHOOT ANGLE TO FLOOR WITH HILTI FASTENERS AS REQUIRED.



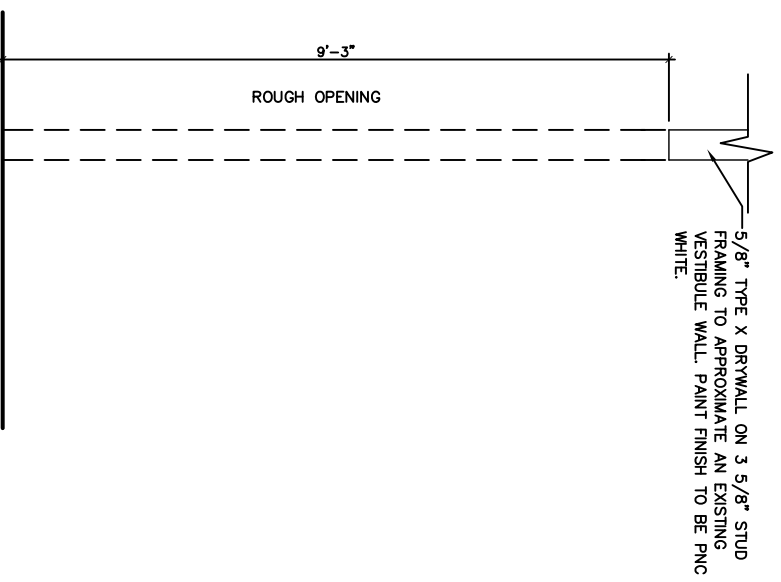
Rough Opening Top View 1

SCALE: 3/8" = 1'-0"



Rough Opening Front View 2

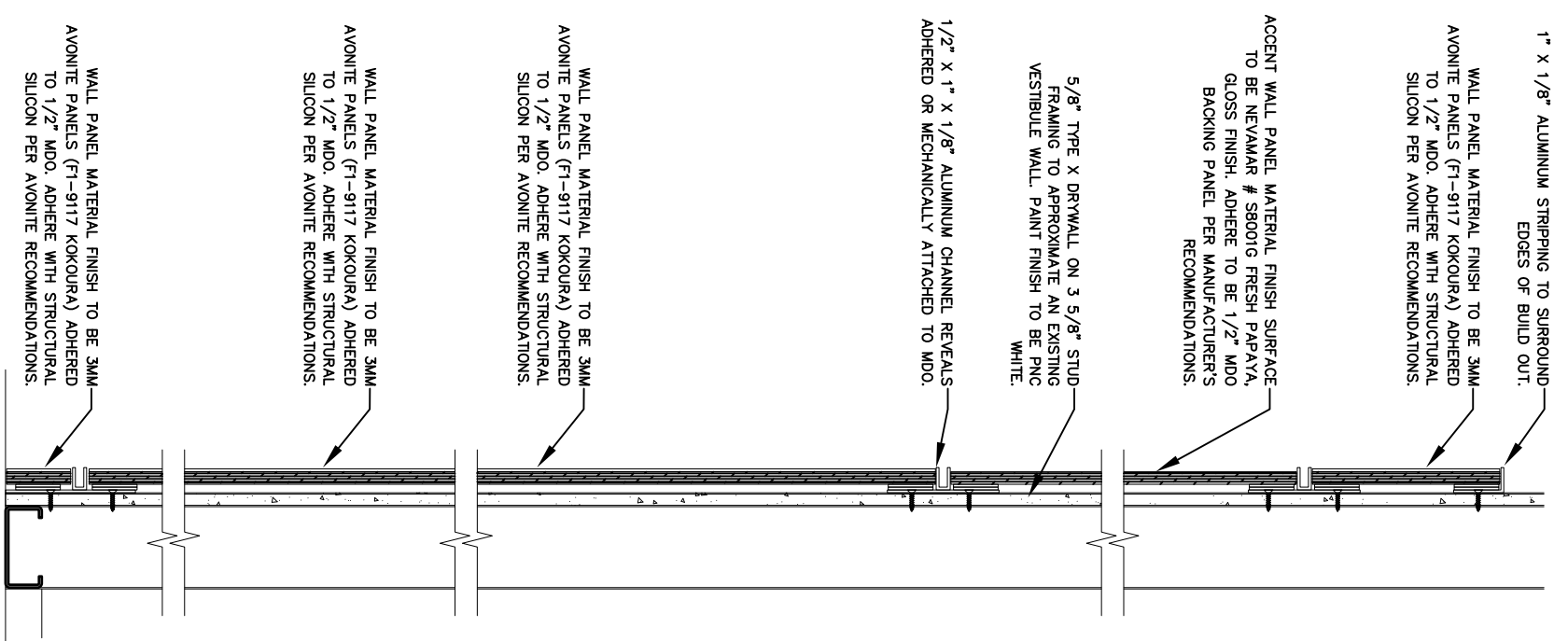
SCALE: 3/8" = 1'-0"



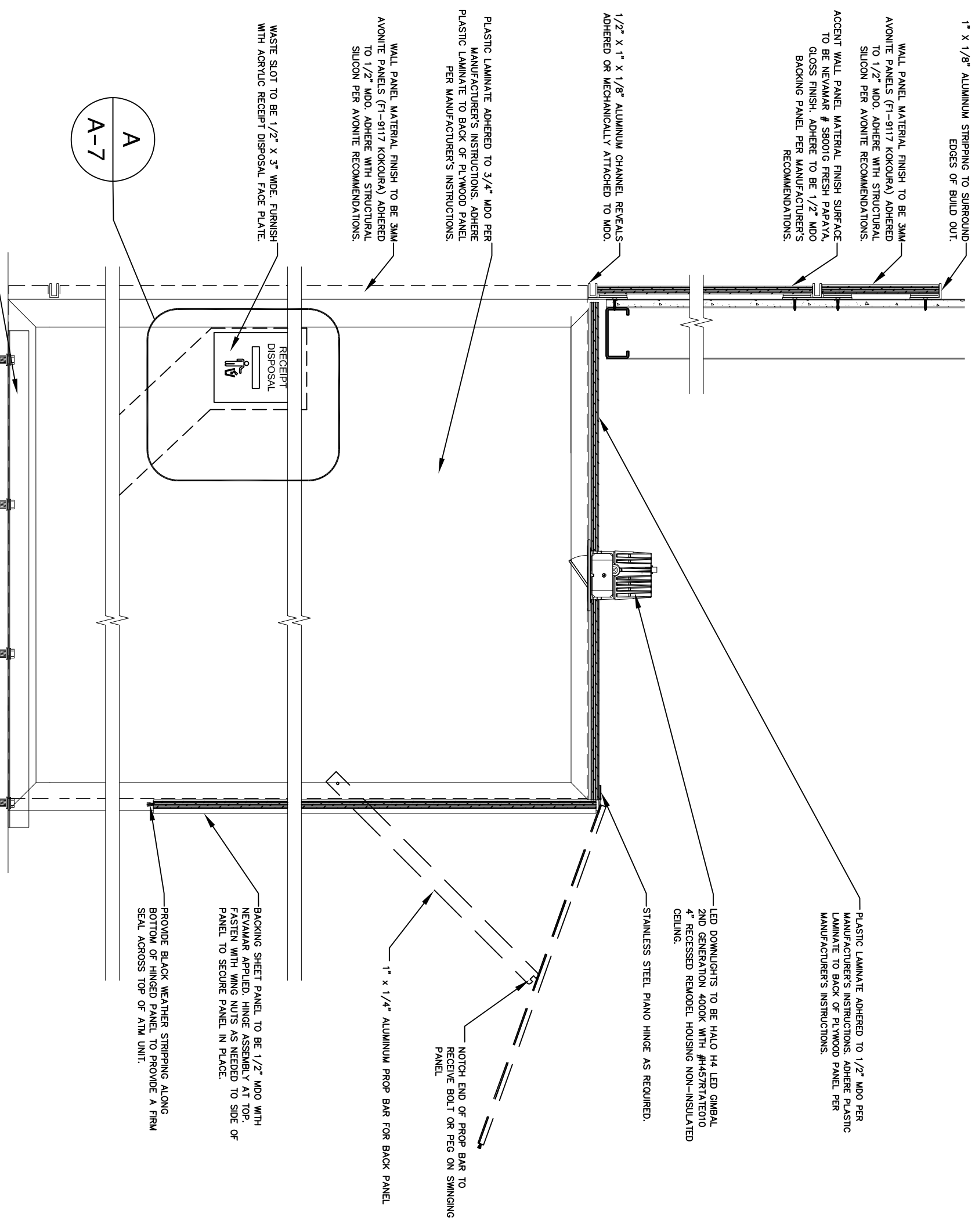
Rough Opening Left Side / Section 3

SCALE: 3/8" = 1'-0"

PNC PBK ATM – Typical Through Wall As Built

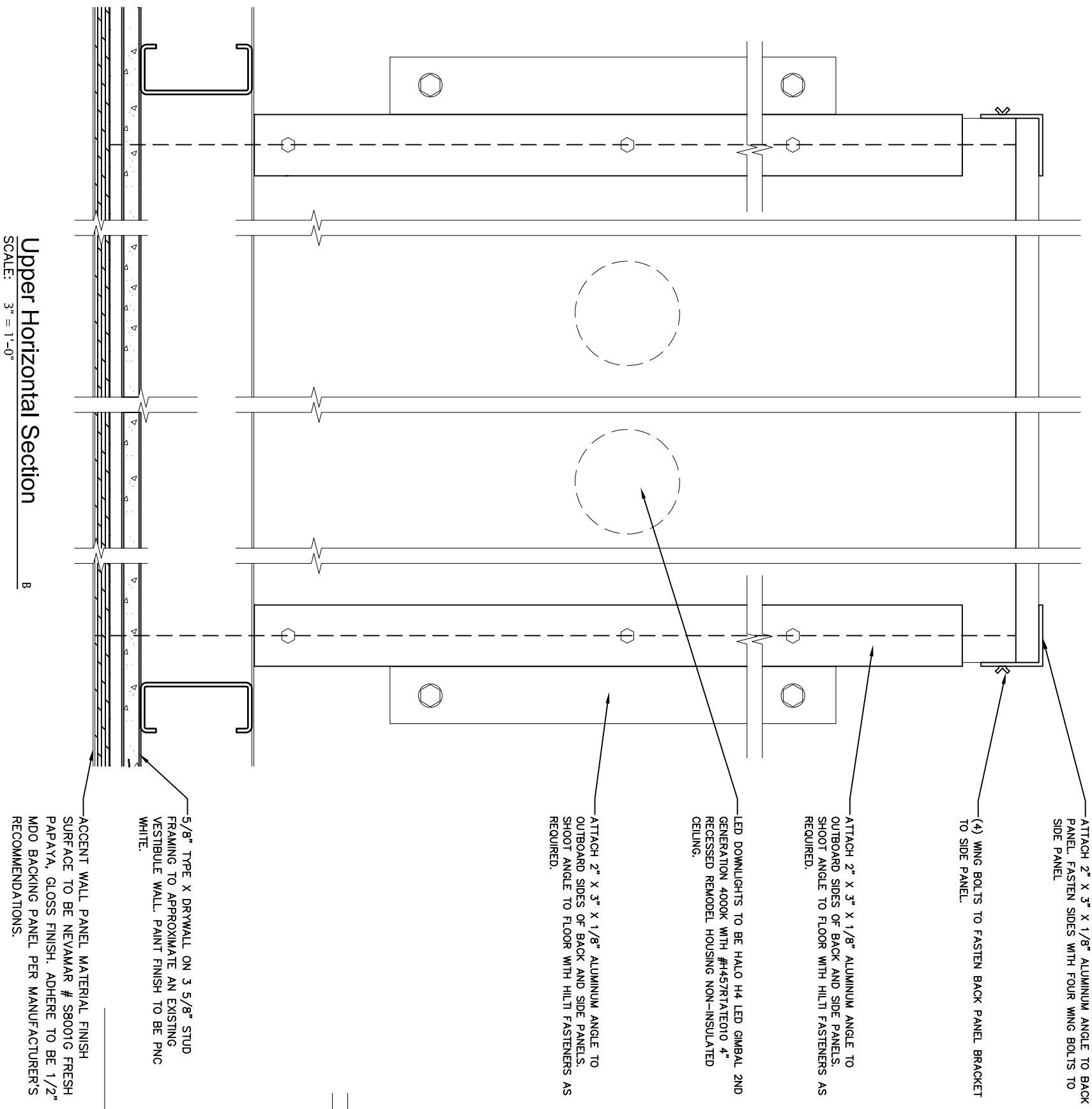


Vertical Section at Panels
SCALE: 1 1/2" = 1'-0"

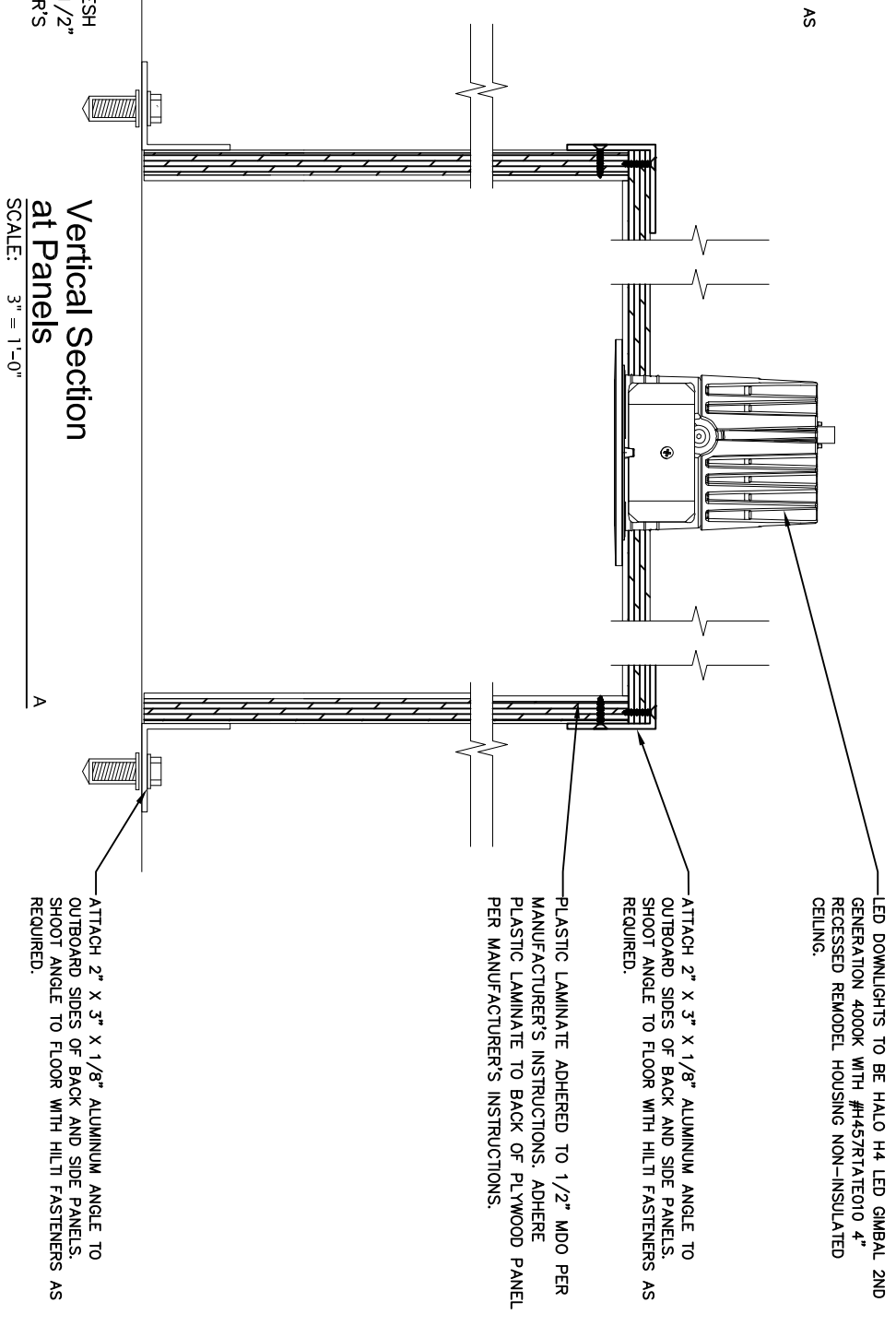


Vertical Section at Alcove
SCALE: 1 1/2" = 1'-0"

PNC PBK ATM - Typical Through Wall As Built

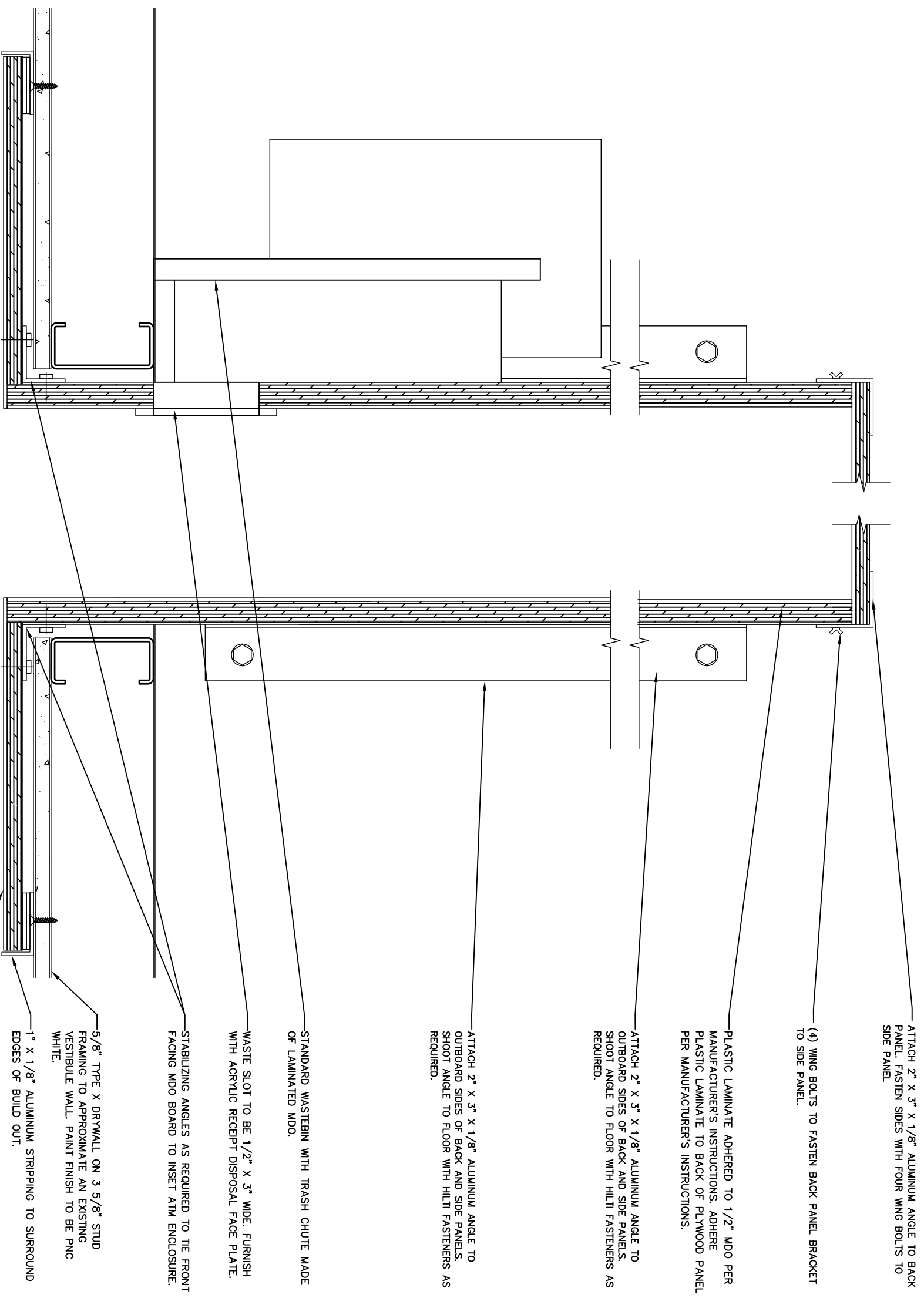


Upper Horizontal Section
 SCALE: 3" = 1'-0"
 B



Vertical Section at Panels
 SCALE: 3" = 1'-0"
 A

PNC PBK ATM – Typical Through Wall As Built

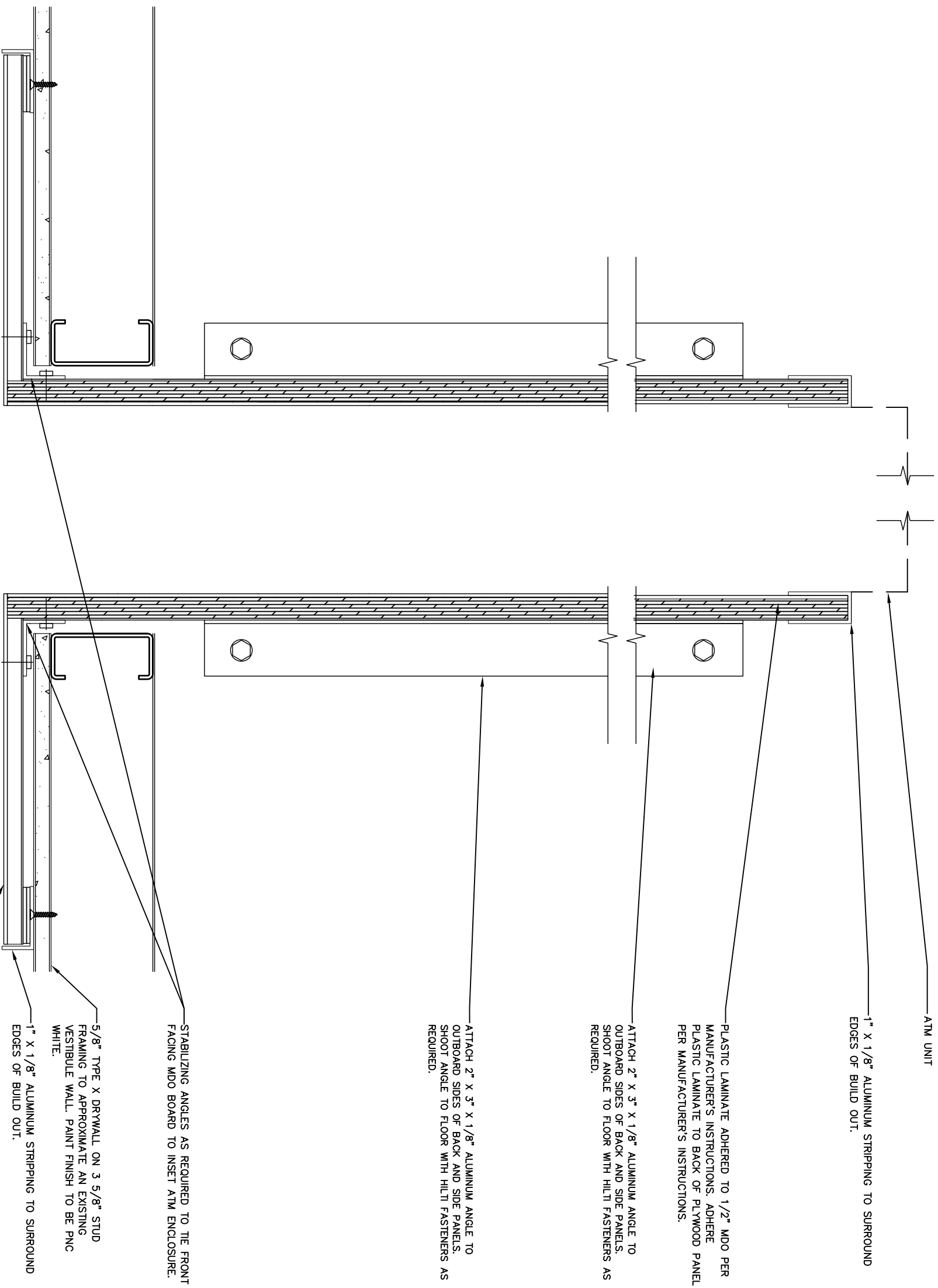


Mid Horizontal Section

SCALE: 3" = 1'-0"

A

- ATTACH 2" X 3" X 1/8" ALUMINUM ANGLE TO BACK PANEL. FASTEN SIDES WITH FOUR WING BOLTS TO SIDE PANEL.
- (4) WING BOLTS TO FASTEN BACK PANEL BRACKET TO SIDE PANEL.
- PLASTIC LAMINATE ADHERED TO 1/2" MDO PER MANUFACTURER'S INSTRUCTIONS. ADHERE PLASTIC LAMINATE TO BACK OF PLYWOOD PANEL PER MANUFACTURER'S INSTRUCTIONS.
- ATTACH 2" X 3" X 1/8" ALUMINUM ANGLE TO OUTBOARD SIDES OF BACK AND SIDE PANELS. SHOOT ANGLE TO FLOOR WITH HILTI FASTENERS AS REQUIRED.
- ATTACH 2" X 3" X 1/8" ALUMINUM ANGLE TO OUTBOARD SIDES OF BACK AND SIDE PANELS. SHOOT ANGLE TO FLOOR WITH HILTI FASTENERS AS REQUIRED.
- STANDARD WASTEBIN WITH TRASH CHUTE MADE OF LAMINATED MDO.
- WASTE SLOT TO BE 1/2" X 3" WIDE. FURNISH WITH ACRYLIC RECEIPT DISPOSAL FACE PLATE.
- STABILIZING ANGLES AS REQUIRED TO TIE FRONT FACING MDO BOARD TO INSET ATM ENCLOSURE.
- 5/8" TYPE X DRYWALL ON 3 5/8" STUD FRAMING TO APPROXIMATE AN EXISTING VESTIBULE WALL. PAINT FINISH TO BE PNC WHITE.
- 1" X 1/8" ALUMINUM STRIPPING TO SURROUND EDGES OF BUILD OUT.
- WALL PANEL MATERIAL FINISH TO BE 3MM AVONITE PANELS (F1-9117 KOKOURA) ADHERED TO 1/2" MDO. ADHERE WITH STRUCTURAL SILICON PER AVONITE RECOMMENDATIONS.



ATM UNIT

1" X 1/8" ALUMINUM STRIPPING TO SURROUND EDGES OF BUILD OUT.

PLASTIC LAMINATE ADHERED TO 1/2" MDO PER MANUFACTURER'S INSTRUCTIONS. ADHERE PLASTIC LAMINATE TO BACK OF PLYWOOD PANEL PER MANUFACTURER'S INSTRUCTIONS.

ATTACH 2" X 3" X 1/8" ALUMINUM ANGLE TO OUTBOARD SIDES OF BACK AND SIDE PANELS. SHOOT ANGLE TO FLOOR WITH HILTI FASTENERS AS REQUIRED.

ATTACH 2" X 3" X 1/8" ALUMINUM ANGLE TO OUTBOARD SIDES OF BACK AND SIDE PANELS. SHOOT ANGLE TO FLOOR WITH HILTI FASTENERS AS REQUIRED.

STABILIZING ANGLES AS REQUIRED TO TIE FRONT FACING MDO BOARD TO INSET ATM ENCLOSURE.

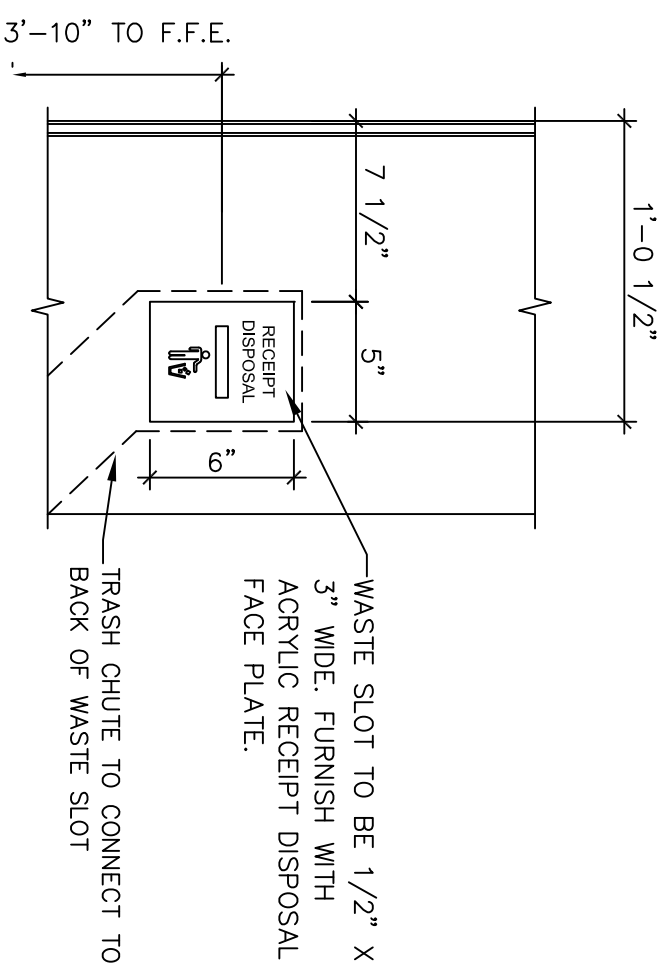
5/8" TYPE X DRYWALL ON 3 5/8" STUD FRAMING TO APPROXIMATE AN EXISTING VESTIBULE WALL. PAINT FINISH TO BE PNC WHITE.

1" X 1/8" ALUMINUM STRIPPING TO SURROUND EDGES OF BUILD OUT.

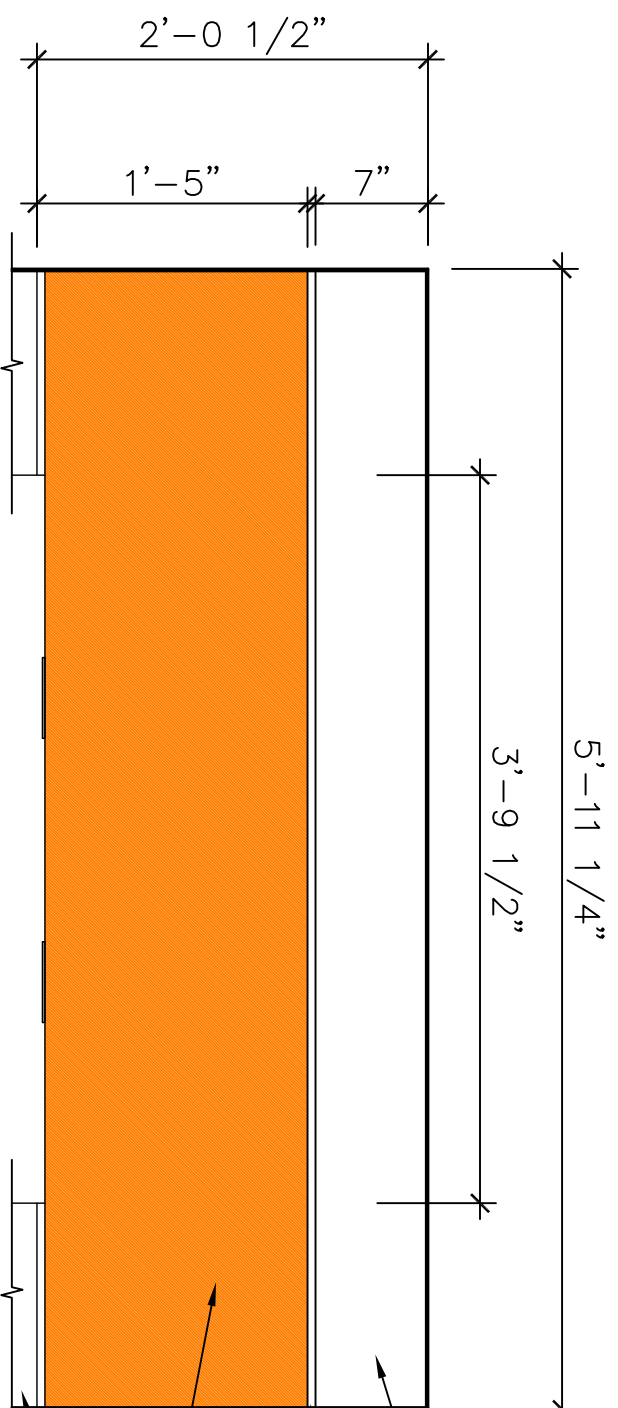
WALL PANEL MATERIAL FINISH TO BE 3MM AVONITE PANELS (FT-9117 KOKOURA) ADHERED TO 1/2" MDO. ADHERE WITH STRUCTURAL SILICON PER AVONITE RECOMMENDATIONS.

Lower Horizontal Section
SCALE: 3" = 1'-0"

PNC PBK ATM – Typical Through Wall As Built



Waste Slot
SCALE: 1 1/2" = 1'-0"



Front View
SCALE: 1" = 1'-0"

- WALL PANEL MATERIAL FINISH TO BE 3MM AVONITE PANELS (F1-9117 KOKOURA) ADHERED TO 1/2" MDO. ADHERE WITH STRUCTURAL SILICON PER AVONITE RECOMMENDATIONS.
- 1/2" X 1" X 1/8" ALUMINUM CHANNEL REVEALS ADHERED OR MECHANICALLY ATTACHED TO MDO.
- 1" X 1/8" ALUMINUM STRIPPING TO SURROUND EDGES OF BUILD OUT.
- ACCENT WALL PANEL MATERIAL FINISH SURFACE TO BE NEVAMAR # S8001G FRESH PAPAYA, GLOSS FINISH. ADHERE TO BE 1/2" MDO BACKING PANEL PER MANUFACTURER'S RECOMMENDATIONS.
- WALL PANEL MATERIAL FINISH TO BE 3MM AVONITE PANELS (F1-9117 KOKOURA) ADHERED TO 1/2" MDO. ADHERE WITH STRUCTURAL SILICON PER AVONITE RECOMMENDATIONS.

PNC PBK ATM – Typical Through Wall As Built