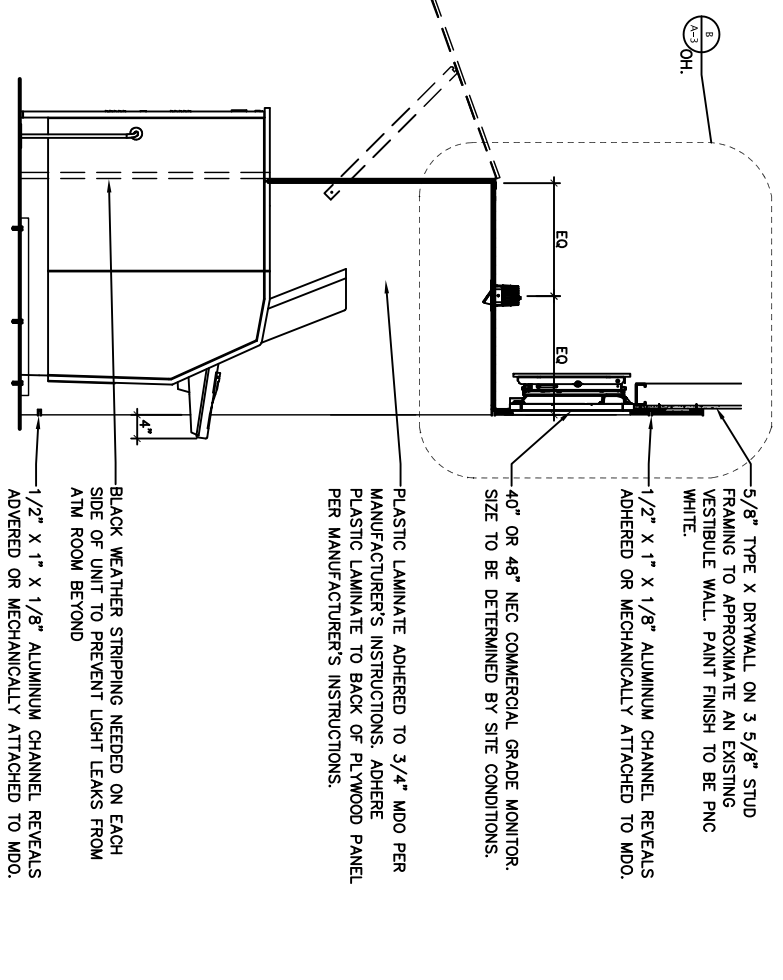
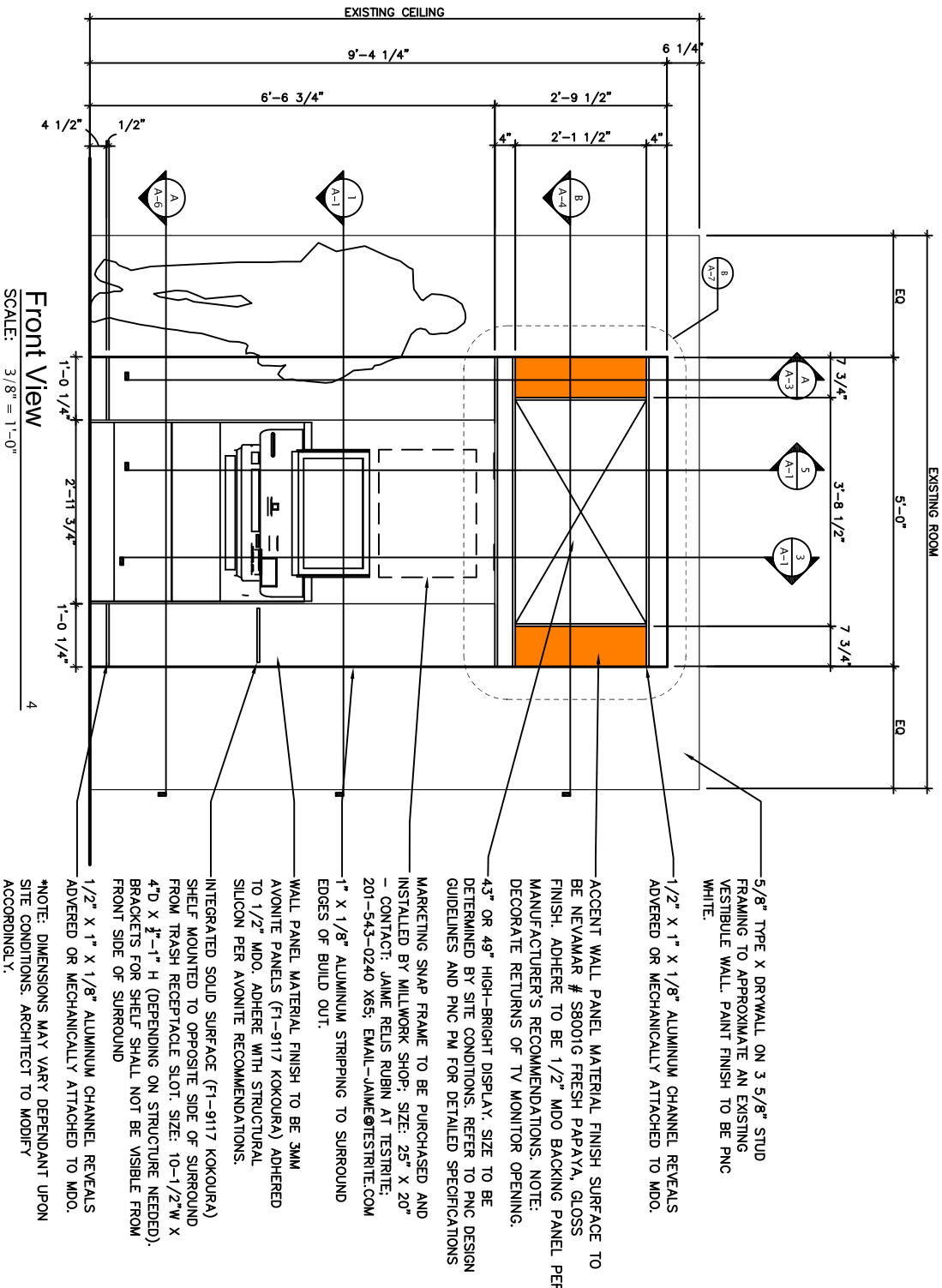


**Top View**  
SCALE: 3/8" = 1'-0"

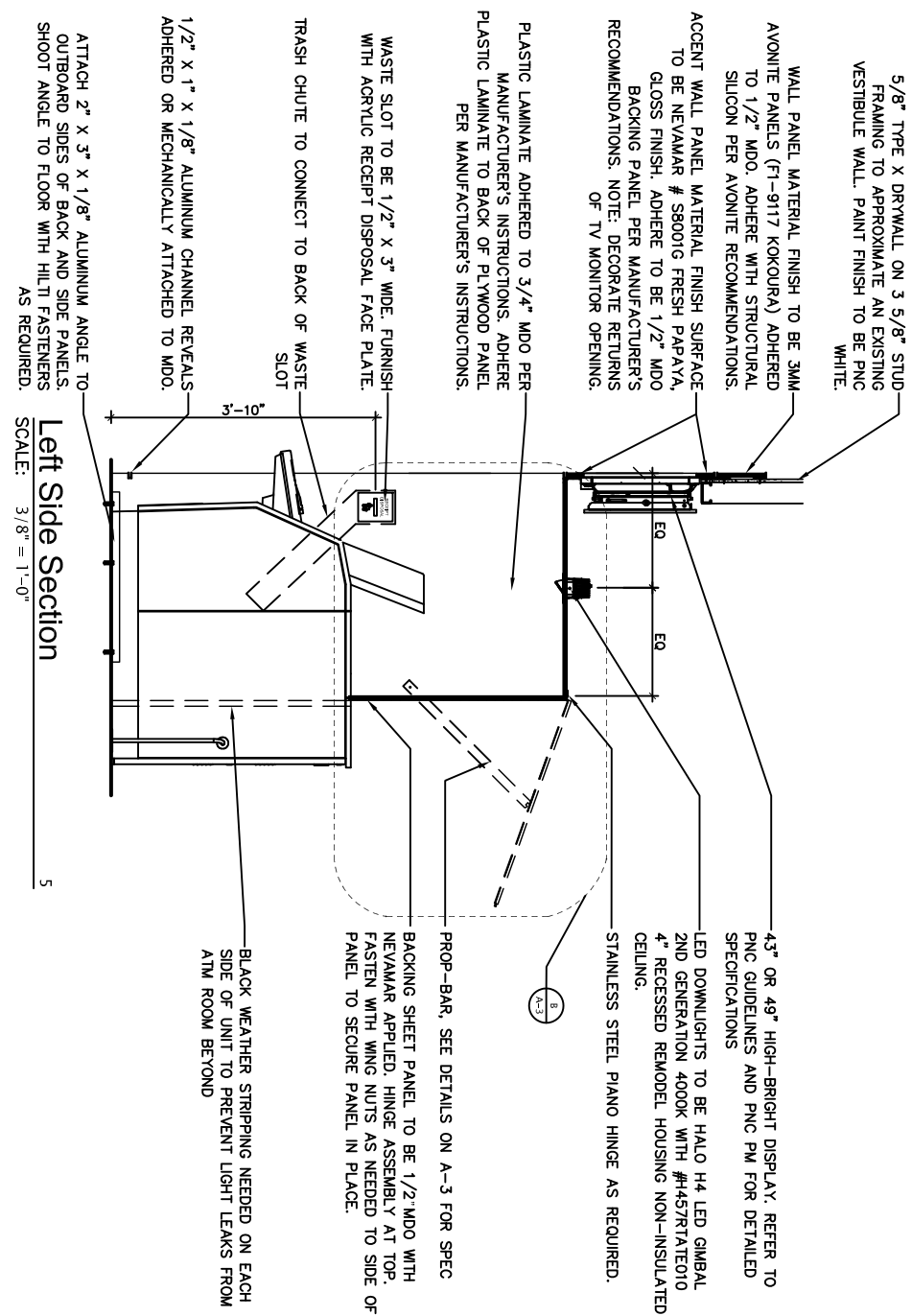
**Plan View**  
SCALE: 3/8" = 1'-0"



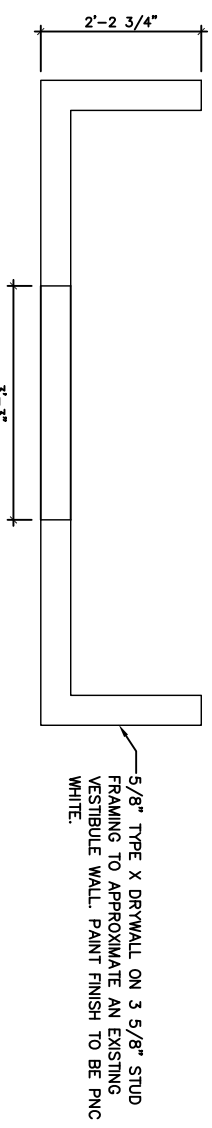
**Right Side Section**  
SCALE: 3/8" = 1'-0"



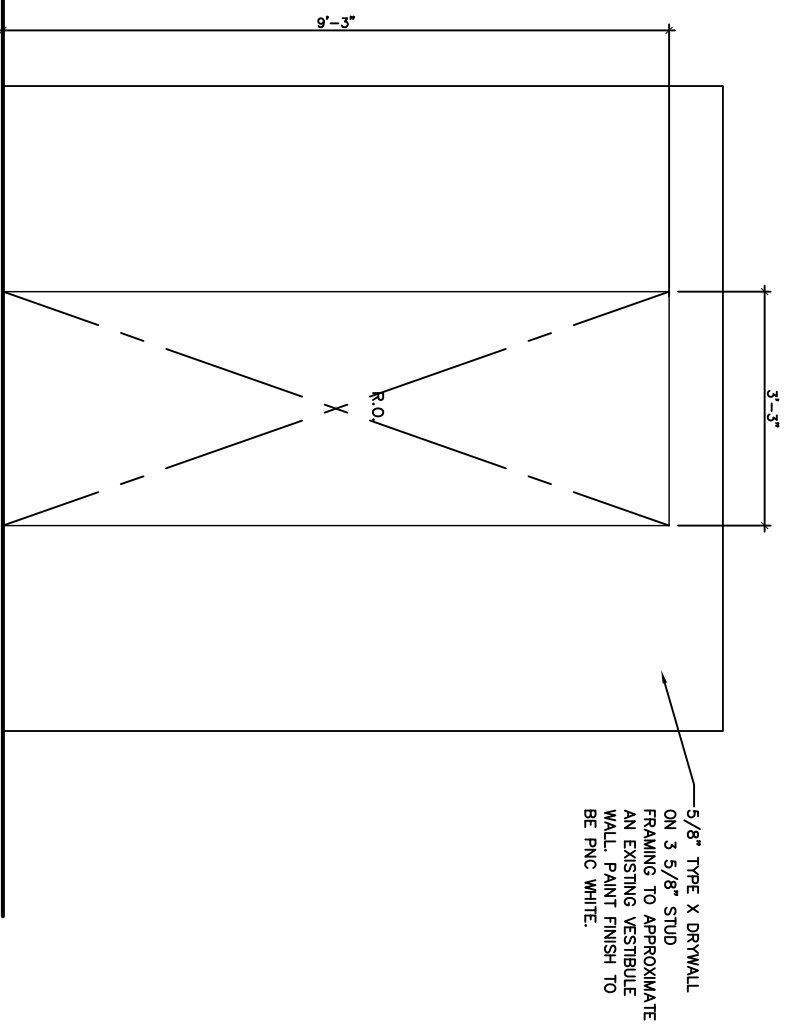
**Front View**  
SCALE: 3/8" = 1'-0"



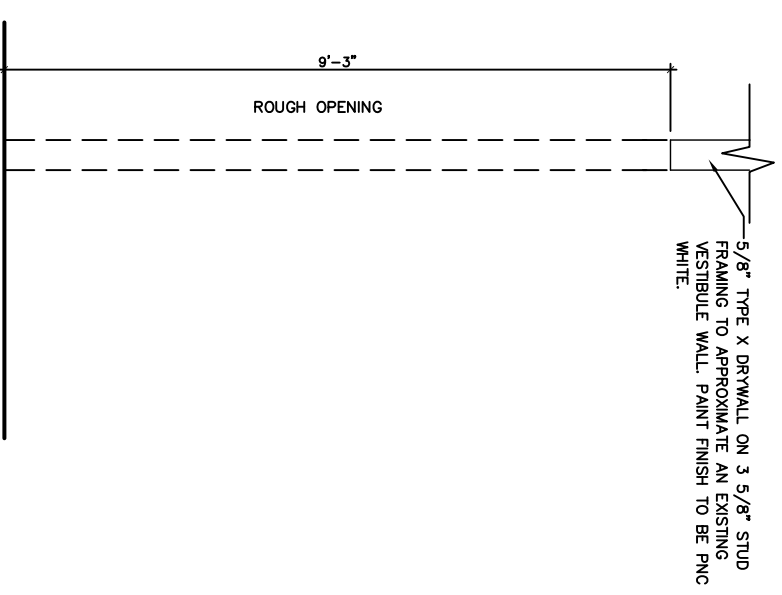
**Left Side Section**  
SCALE: 3/8" = 1'-0"



**Rough Opening Top View** 1  
SCALE: 3/8" = 1'-0"

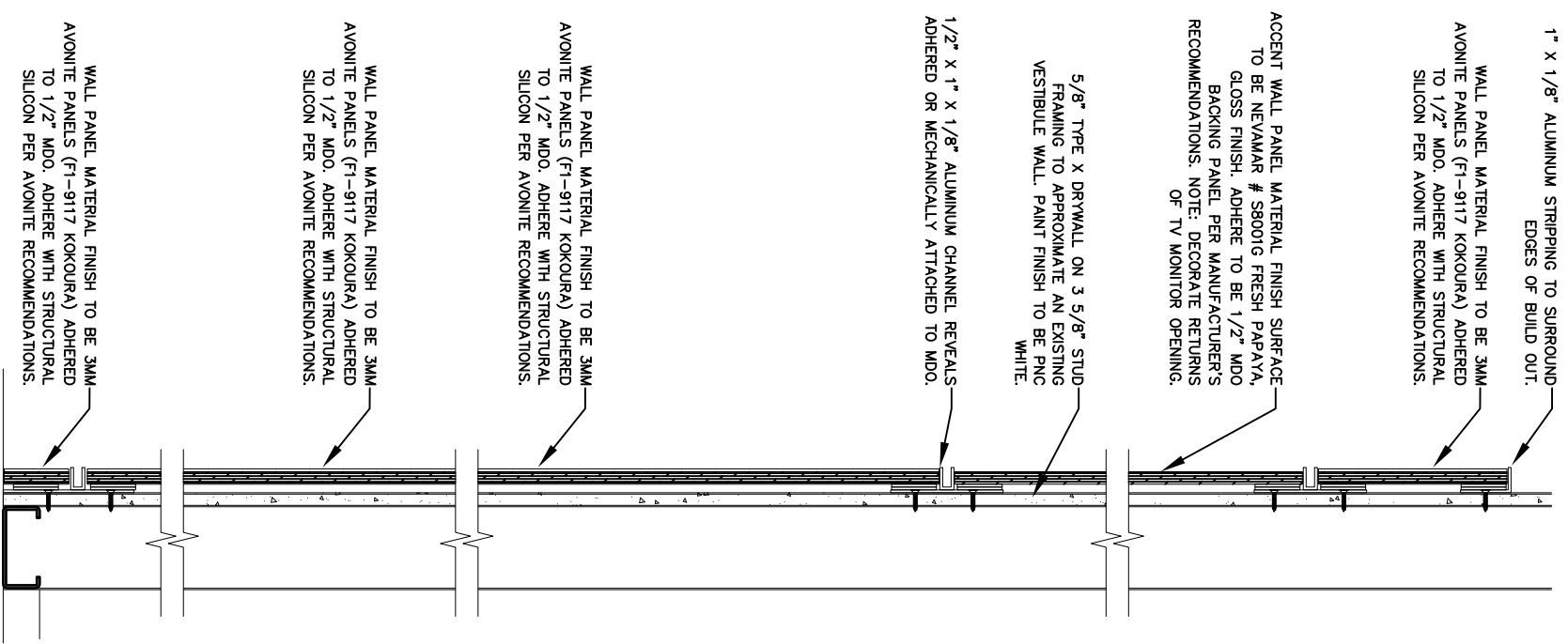


**Rough Opening Front View** 2  
SCALE: 3/8" = 1'-0"

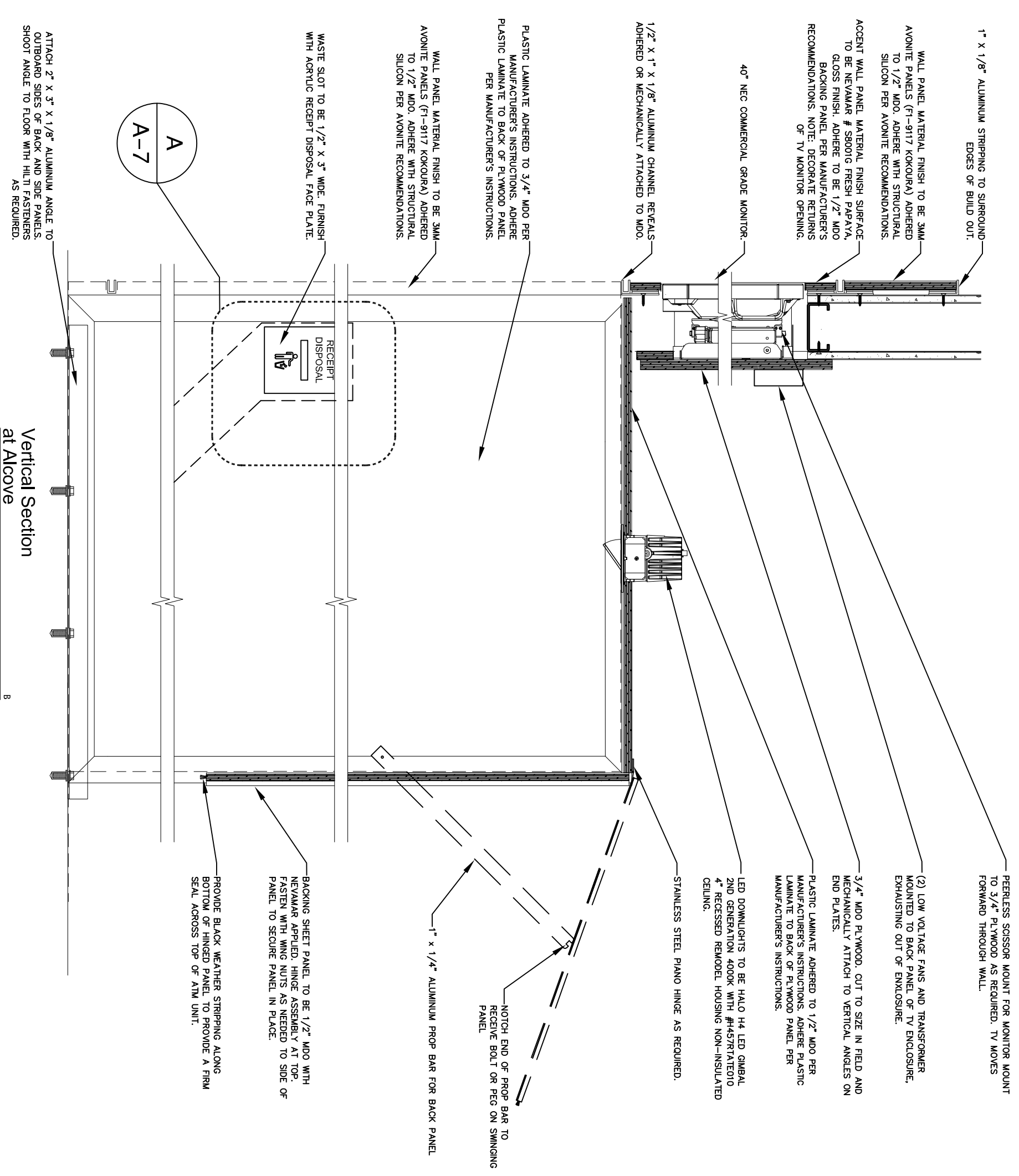


**Rough Opening Left Side / Section** 3  
SCALE: 3/8" = 1'-0"

PNC PBK ATM – Typical Through Wall With TV – As Built

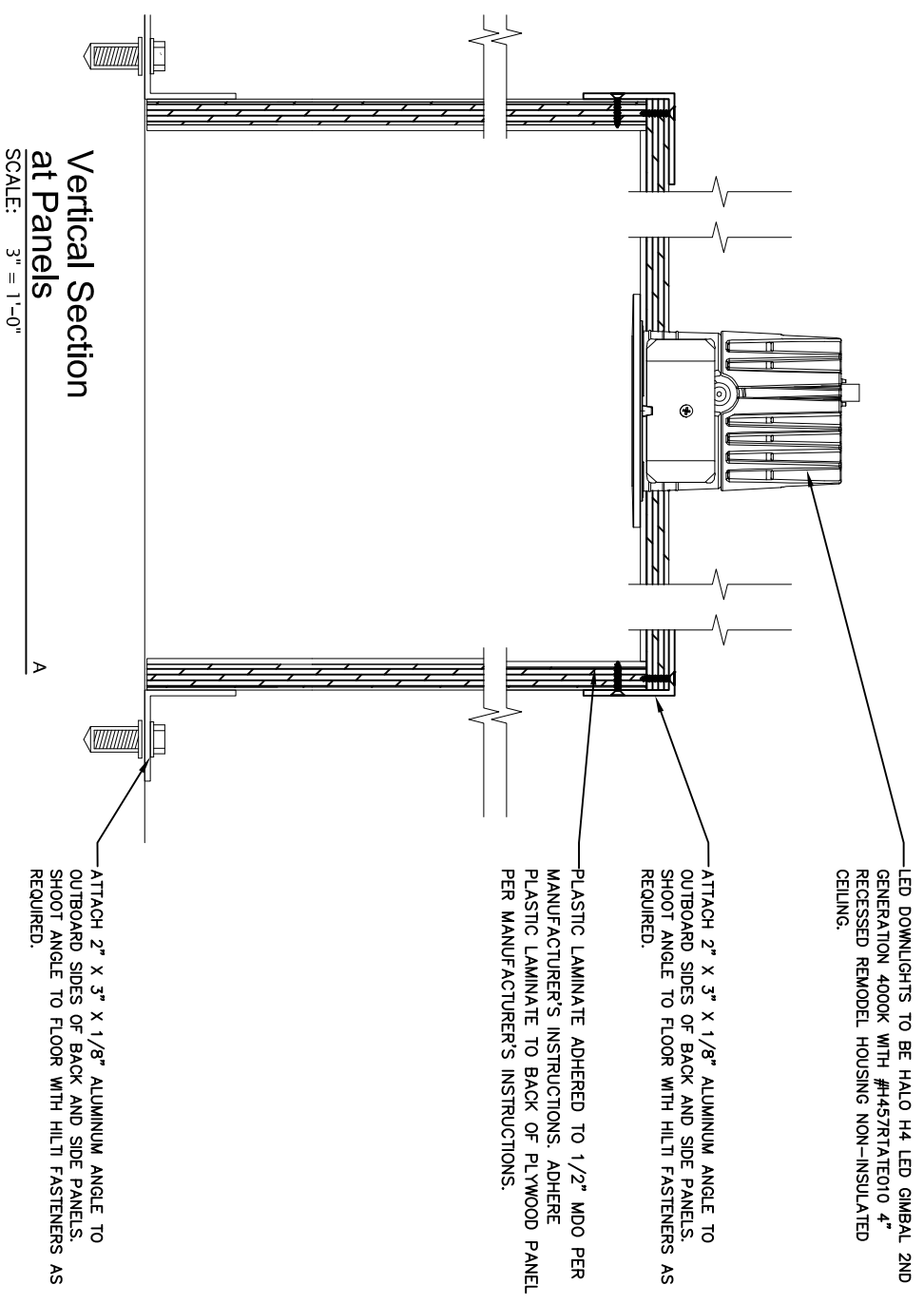
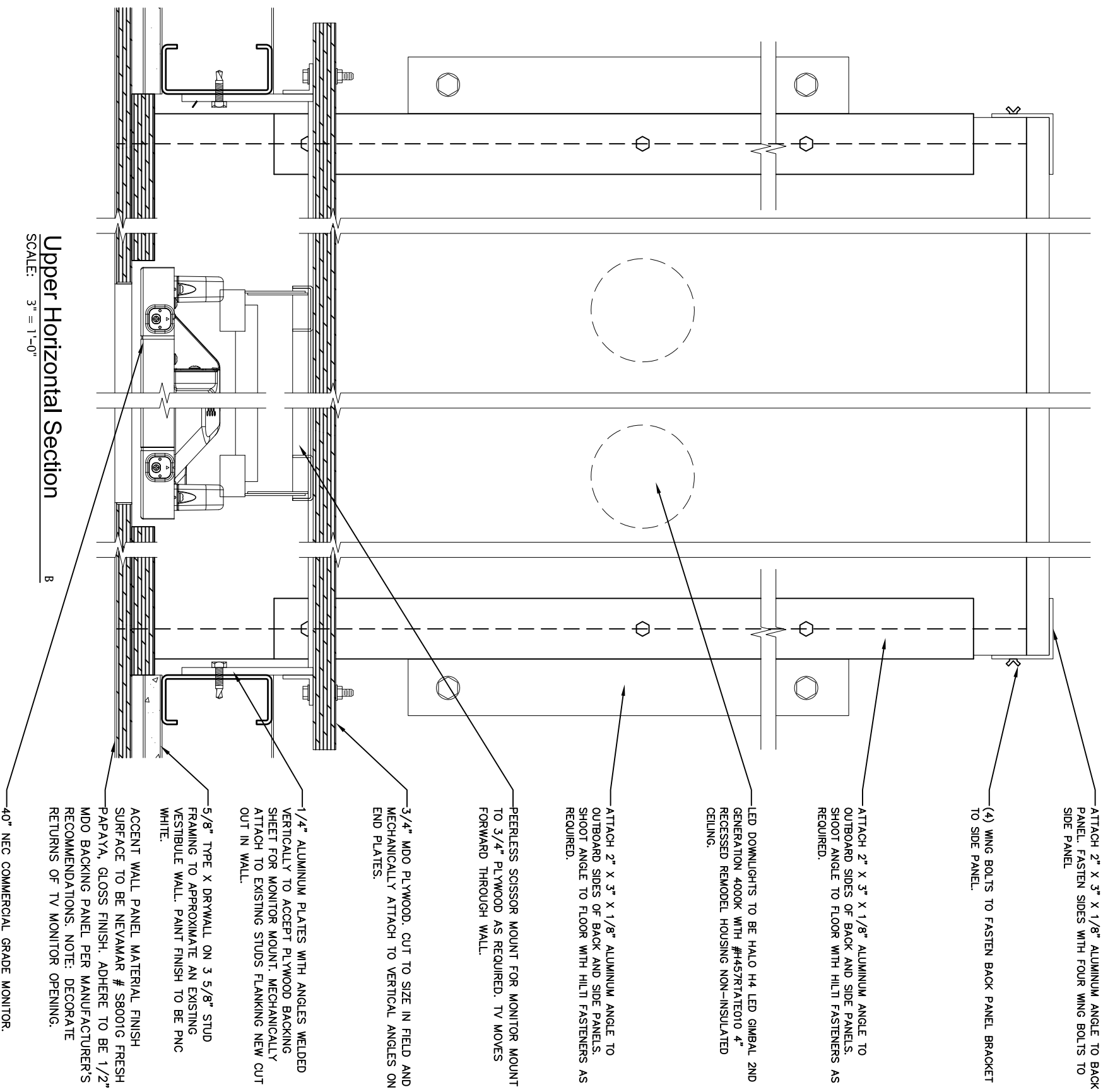


**Vertical Section at Panels**  
SCALE: 1 1/2" = 1'-0"

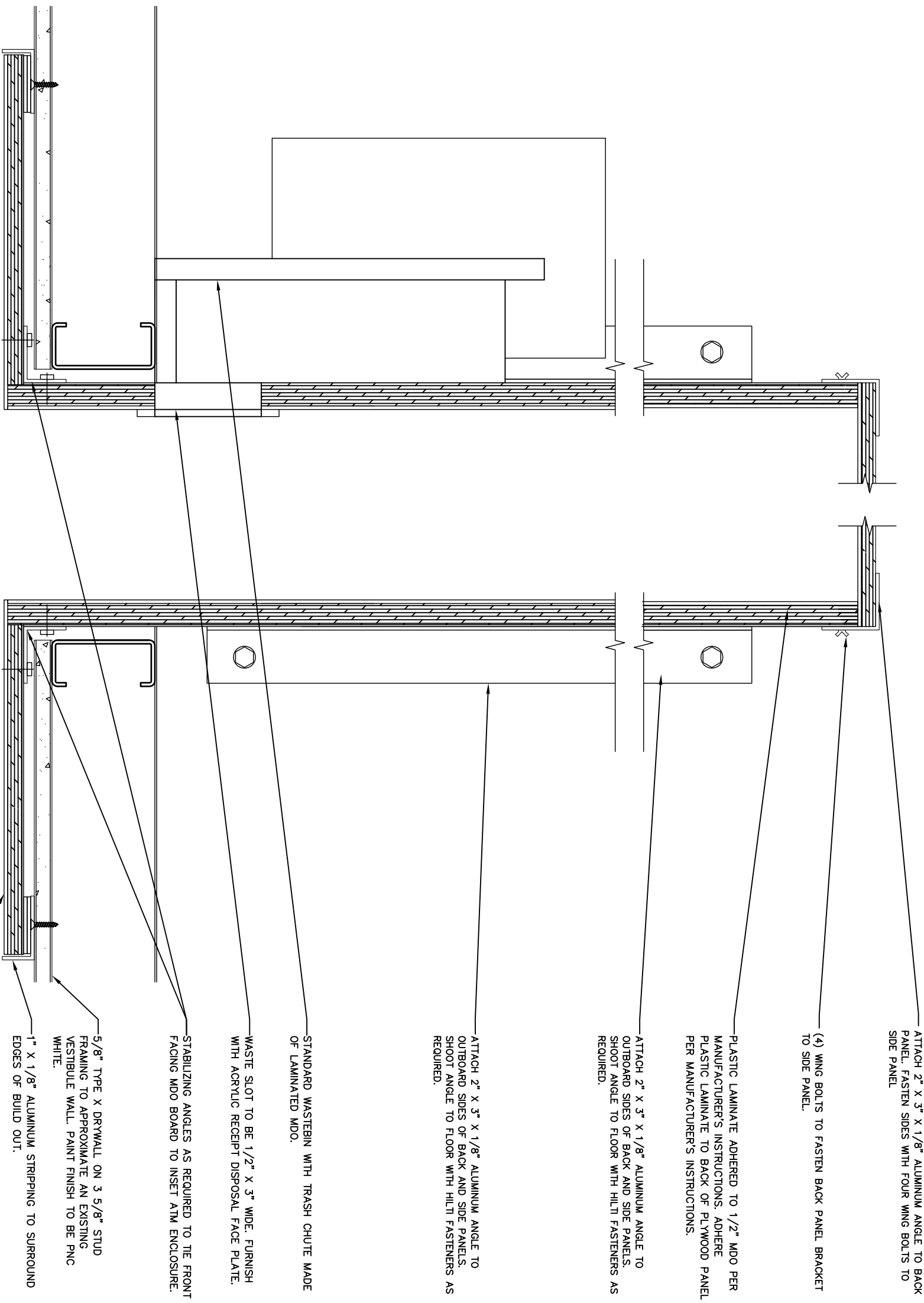


**Vertical Section at Alcove**  
SCALE: 1 1/2" = 1'-0"

**PNC PBK ATM – Typical Through Wall With TV – As Built**



PNC PBK ATM – Typical Through Wall with TV – As Built



Mid Horizontal Section  
 SCALE: 3" = 1'-0"  
 A

ATTACH 2" X 3" X 1/8" ALUMINUM ANGLE TO BACK PANEL. FASTEN SIDES WITH FOUR WING BOLTS TO SIDE PANEL

(4) WING BOLTS TO FASTEN BACK PANEL BRACKET TO SIDE PANEL.

PLASTIC LAMINATE ADHERED TO 1/2" MDO PER MANUFACTURER'S INSTRUCTIONS. ADHERE PLASTIC LAMINATE TO BACK OF PLYWOOD PANEL PER MANUFACTURER'S INSTRUCTIONS.

ATTACH 2" X 3" X 1/8" ALUMINUM ANGLE TO OUTBOARD SIDES OF BACK AND SIDE PANELS. SHOOT ANGLE TO FLOOR WITH HILTI FASTENERS AS REQUIRED.

ATTACH 2" X 3" X 1/8" ALUMINUM ANGLE TO OUTBOARD SIDES OF BACK AND SIDE PANELS. SHOOT ANGLE TO FLOOR WITH HILTI FASTENERS AS REQUIRED.

STANDARD WASTE BIN WITH TRASH CHUTE MADE OF LAMINATED MDO.

WASTE SLOT TO BE 1/2" X 3" WIDE. FURNISH WITH ACRYLIC RECEIPT DISPOSAL FACE PLATE.

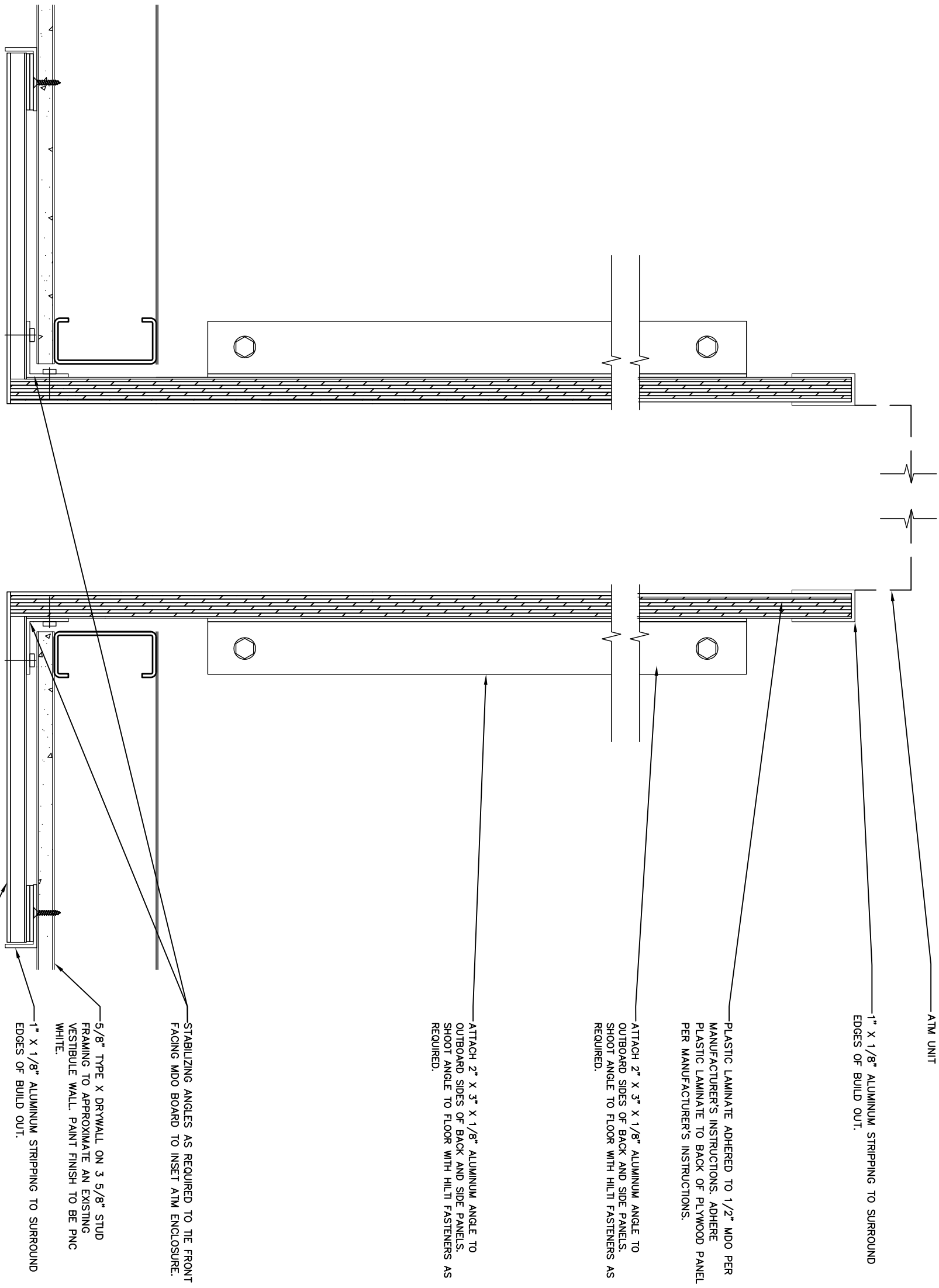
STABILIZING ANGLES AS REQUIRED TO TIE FRONT FACING MDO BOARD TO INSET ATM ENCLOSURE.

5/8" TYPE X DRYWALL ON 3 5/8" STUD FRAMING TO APPROXIMATE AN EXISTING VESTIBULE WALL. PAINT FINISH TO BE PNC WHITE.

1" X 1/8" ALUMINUM STRIPPING TO SURROUND EDGES OF BUILD OUT.

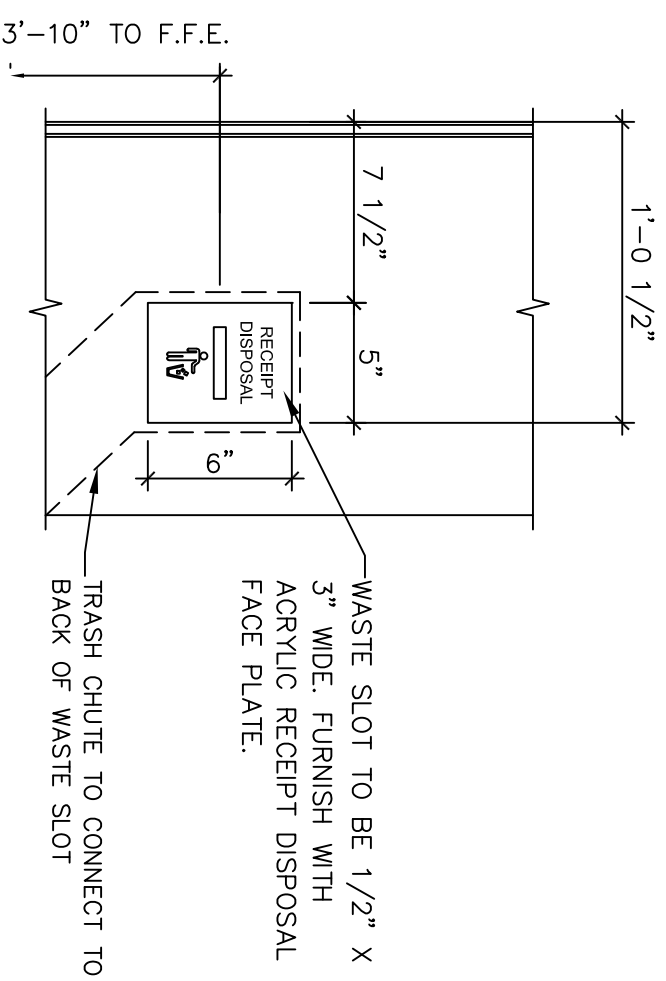
WALL PANEL MATERIAL FINISH TO BE 3MM AVONITE PANELS (F1-9117 KOKOURA) ADHERED TO 1/2" MDO. ADHERE WITH STRUCTURAL SILICON PER AVONITE RECOMMENDATIONS.

PNC PBK ATM – Typical Through Wall With TV – As Built

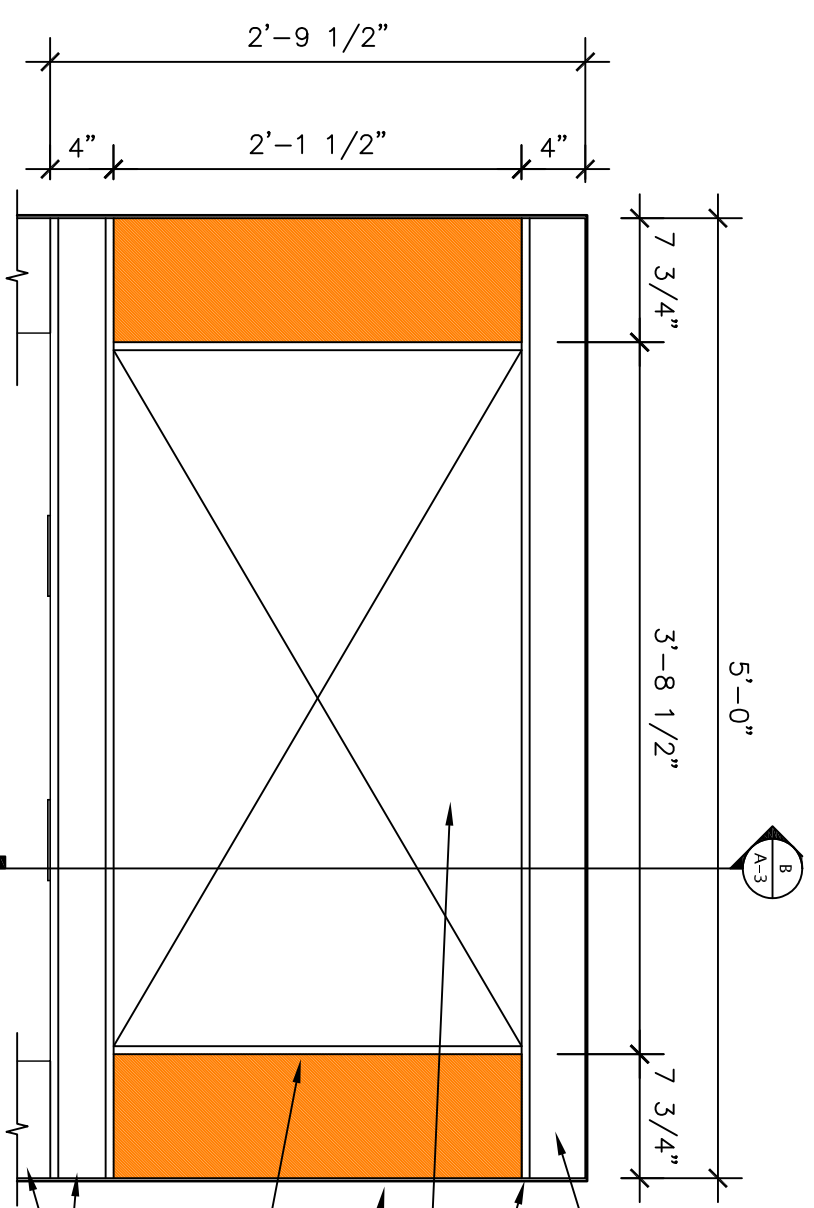


**Lower Horizontal Section**  
 SCALE: 3" = 1'-0"

PNC PBK ATM – Typical Through Wall With TV – As Built



**Waste Slot**  
SCALE: 1 1/2" = 1'-0"



**Upper Monitor Front View**  
SCALE: 1" = 1'-0"

PNC PBK ATM – Typical Through Wall With TV – As Built