

SHEET NOTES:

- ① SHARP 46" LED/LCD DISPLAY WITH CHIEF LTMU TILT MOUNT PROVIDED AND INSTALLED BY AV CONTRACTOR, CENTERLINE OF TABLE.
- ② SHARP 60" LED/LCD DISPLAY WITH CHIEF XTMU TILT MOUNT PROVIDED AND INSTALLED BY AV CONTRACTOR, CENTERLINE OF TABLE.
- ③ SHARP 80" LED/LCD DISPLAY WITH CHIEF XSMU STATIC MOUNT PROVIDED AND INSTALLED BY AV CONTRACTOR, CENTERLINE OF TABLE.

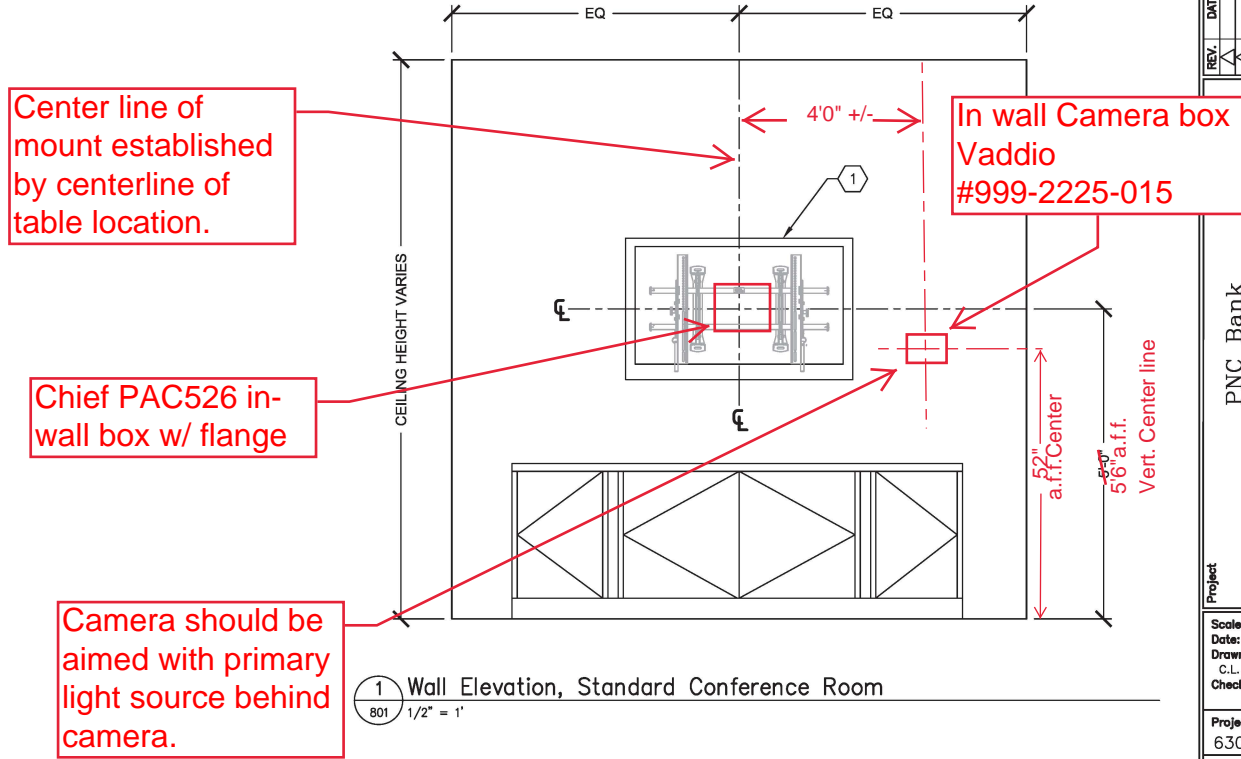
- 1 - Samsung 55" f/Small Conf. Rms
- 2 - Samsung 65"/75" f/ Med Conf. Rms
- 3 - Samsung 85 + for Lg. Conf Rms.

GENERAL NOTES:

1. THE PROJECT ELECTRICAL CONTRACTOR SHALL FURNISH AND INSTALL A COMPLETE ELECTRICAL AND CONDUIT INFRASTRUCTURE AS SHOWN ON THE DRAWINGS AND AS LISTED IN THE SCHEDULE TO SUPPORT THE AUDIO-VISUAL SYSTEMS, TO INCLUDE: POWER CIRCUITING, RECEPTACLES, CONDUIT, SLEEVES, CABLE TRAY, INNERDUCT, FLOOR BOXES, BACK BOXES AND JUNCTION BOXES.
2. THE AUDIO-VISUAL CONTRACTOR SHALL FURNISH AND INSTALL ALL LOW-VOLTAGE AUDIO-VISUAL CABLING AND TERMINATIONS, EXCEPT WHERE NOTED, AND AS SHOWN ON THE DRAWINGS AND AS LISTED IN THE SCHEDULE TO INCLUDE: FIBER OPTIC, COAXIAL, AUDIO, SPEAKER AND CONTROL CABLES.
3. LOCAL AREA NETWORK, TELEPHONE, CATV AND CCTV CABLES AND TERMINATIONS ARE TO BE FURNISHED AND INSTALLED BY OTHERS.
4. THESE DRAWINGS SHALL BE USED ONLY TO REFERENCE ELECTRICAL & CONDUIT INFRASTRUCTURE REQUIREMENTS TO SUPPORT THE AUDIO-VISUAL SYSTEMS. REFER TO OTHER PROJECT DRAWINGS (ARCHITECTURAL, ELECTRICAL, COMMUNICATIONS, ETC.) AS REQUIRED TO COORDINATE THE INSTALLATION OF ELECTRICAL AND CONDUIT INFRASTRUCTURE WITH THE AUDIO-VISUAL SYSTEMS.

AVI-SPL
 207 Commerce Park Drive
 Cranberry Township, PA 15066
 Toll Free: (866) 847-5198
 Phone: (724) 776-3877
 Fax: (724) 776-3890
 www.avispl.com

REV.	DATE	APPROV.	STATUS	DESCRIPTION
1				
2				
3				
4				
5				
6				
7				
8				
9				
10				



Center line of mount established by centerline of table location.

Chief PAC526 in-wall box w/ flange

Camera should be aimed with primary light source behind camera.

In wall Camera box
 Vaddio
 #999-2225-015

① Wall Elevation, Standard Conference Room
 801 1/2" = 1'

Project
 PNC Bank
 Playbook
 Drawing Title
 Standard Conference Room
 AV Elevations & Details

Scale: 1/2" = 1'
 Date: 20 MAR 2013
 Drawn by:
 C.L.
 Checked by:

Project Number:
 630i-13-xxxxx

Drawing #
 AV-801
 Sheet 1 of 1